

Staff Report

for the Board of Directors' Meeting of January 11, 2017

TO: Board of Directors

FROM: Chip Close, Water Operations Manager
Shannon Wood, Business Services Technician

DATE: January 3, 2017

SUBJECT: Rock Creek Road District Financed Waterline Extension

OPERATIONS

RECOMMENDATION:

Encumber funds for the Rock Creek Road District Financed Waterline Extension project as recommended by the Administrative Practices Committee.

BACKGROUND:

The District received a petition signed by twenty-three (23) landowners to extend treated water from Lake Vera Purdon Road north on Rock Creek Road continuing east on Homburg Road. The signed petition meets the 60 percent threshold and the area has been mapped using the current policy methods.

The Engineering Committee recognized this group May 19, 2015. The project proposes approximately 6,200 lf of 8-inch pipe, potentially serving 36 parcels of which 26 are mainline connections and 10 are variance connections. It appears that there are 8 vacant parcels and 3 designated miscellaneous. The policy outlines limiting unimproved parcels to 20 percent which in this case is seven.

The Administrative Practices Committee reviewed the project at the January 3, 2017 meeting. Staff highlighted that there are four property owners who own multiple properties; it was clarified that the parcels are separate and would require separate funding agreements. Additionally, the issue of eleven parcels being unimproved did not pose a problem; the 20 percent maximum is a soft target.

The committee unanimously agreed to advance to the Board of Directors to encumber funds as appropriate.

BUDGETARY IMPACT: As follows:

Total Project Estimate: \$1,123,834

Community Investment Program: \$46,160

CIP, Capital Reserve Fund or Other Source(s): \$1,077,674

Cash Deposit (Good Faith Deposit 22 @ \$2,994): \$65,868

Deferred Revenue (minimum of 22 @ \$26,941): \$592,702

Future Reimbursement (14 parcels @ \$29,935): \$419,090

/sm

Attachments (2):

- Project Estimate
- Area Map

ROCK CREEK DFWLE

District Financed Waterline Extension

ADMINISTRATION
EWO - 2080

	Description	Quantity		Unit Cost	Total Cost	District Participation		Project Participant Costs
						Transmission & Storage Facilities	Community Investment Funds	
Up-Front	Preliminary engineering study (Labor)	1	ls	\$500	\$500	\$0	\$500	\$0
	Engineering administration (Labor)	1	ls	\$1,500	\$1,500	\$0	\$1,500	\$0
	Survey and Engineering (Consultant)	1	ls	\$1,500	\$1,500	\$0	\$1,500	\$0
	Right of way (Labor)	1	ls	\$1,000	\$1,000	\$0	\$1,000	\$0
	Engineering/Administration Subtotal				\$4,500	\$0	\$4,500	\$0
	Burden on Payroll (Labor only)	47	%		\$1,410	\$0	\$1,410	\$0
	<i>Subtotal</i>				\$5,910	\$0	\$5,910	\$0
After Agreement	Contract administration (Labor)	1	ls	\$3,000	\$3,000	\$0	\$0	\$3,000
	Engineering administration (Labor)	1	ls	\$12,000	\$12,000	\$0	\$0	\$12,000
	Engineering (Consulting fees)	1	ls	\$0	\$0	\$0	\$0	\$0
	Drafting (Labor)	1	ls	\$4,000	\$4,000	\$0	\$0	\$4,000
	Survey (Labor)	1	ls	\$12,000	\$12,000	\$0	\$0	\$12,000
	Inspection (Labor)	1	ls	\$7,000	\$7,000	\$0	\$0	\$7,000
	Right of way (Labor)	1	ls	\$2,000	\$2,000	\$0	\$0	\$2,000
	Right of way (Acquisition) ¹	1	ls	\$10,000	\$10,000	\$0	\$0	\$10,000
	Right of way (Consultant)	1	ls	\$0	\$0	\$0	\$0	\$0
	CEQA administration (Labor) ³	1	ls	\$100	\$100	\$0	\$0	\$100
	Fish & Game, CEQA, & Recording Fees	1	ls	\$0	\$0	\$0	\$0	\$0
		Engineering/Administration Subtotal				\$50,100	\$0	\$0
	Burden on Payroll (Labor only)	47	%		\$18,847	\$0	\$0	\$18,847
	<i>Subtotal</i>				\$68,947	\$0	\$0	\$68,947
Administration Subtotal					\$74,857	\$0	\$5,910	\$68,947

CONSTRUCTION

	Description	Quantity		Unit Cost	Total Cost	District Participation		Project Participant Costs
						Transmission & Storage Facilities	Community Investment Funds	
	Clearing and grubbing/bonds/mob	1	ls	\$3,000	\$3,000	\$0	\$0	\$3,000
	8-inch pipe ²	6,200	ft	\$120	\$744,000	\$0	\$0	\$744,000
	Microsurface - County Road	90,440	sf	\$0.35	\$31,654	\$0	\$0	\$31,654
	2-inch blowoff	3	ea	\$2,200	\$6,600	\$0	\$0	\$6,600
	Air release assembly	3	ea	\$2,200	\$6,600	\$0	\$0	\$6,600
	8-inch valve	4	ea	\$2,000	\$8,000	\$0	\$0	\$8,000
	Fire hydrant	7	ea	\$5,000	\$35,000	\$0	\$35,000	\$0
	Main ending with blowoff	0	ls	\$2,000	\$0	\$0	\$0	\$0
	Single service assembly	36	ea	\$1,800	\$64,800	\$0	\$0	\$64,800
	Double service assembly	0	ea	\$2,000	\$0	\$0	\$0	\$0
	Rock Removal	50	cy	\$250	\$12,500	\$0	\$0	\$12,500
	<i>Construction Subtotal</i>				\$912,154	\$0	\$35,000	\$877,154
	Contingency	15	%		\$136,823	\$0	\$5,250	\$131,573
Construction Subtotal					\$1,048,977	\$0	\$40,250	\$1,008,727

TOTAL ESTIMATED PROJECT COST \$1,123,834 \$0 \$46,160 \$1,077,674

TOTAL PARTICIPANT COST PER PARCEL = \$29,935

36 Total Parcels
 8 vacant
 3 miscell
 25 built

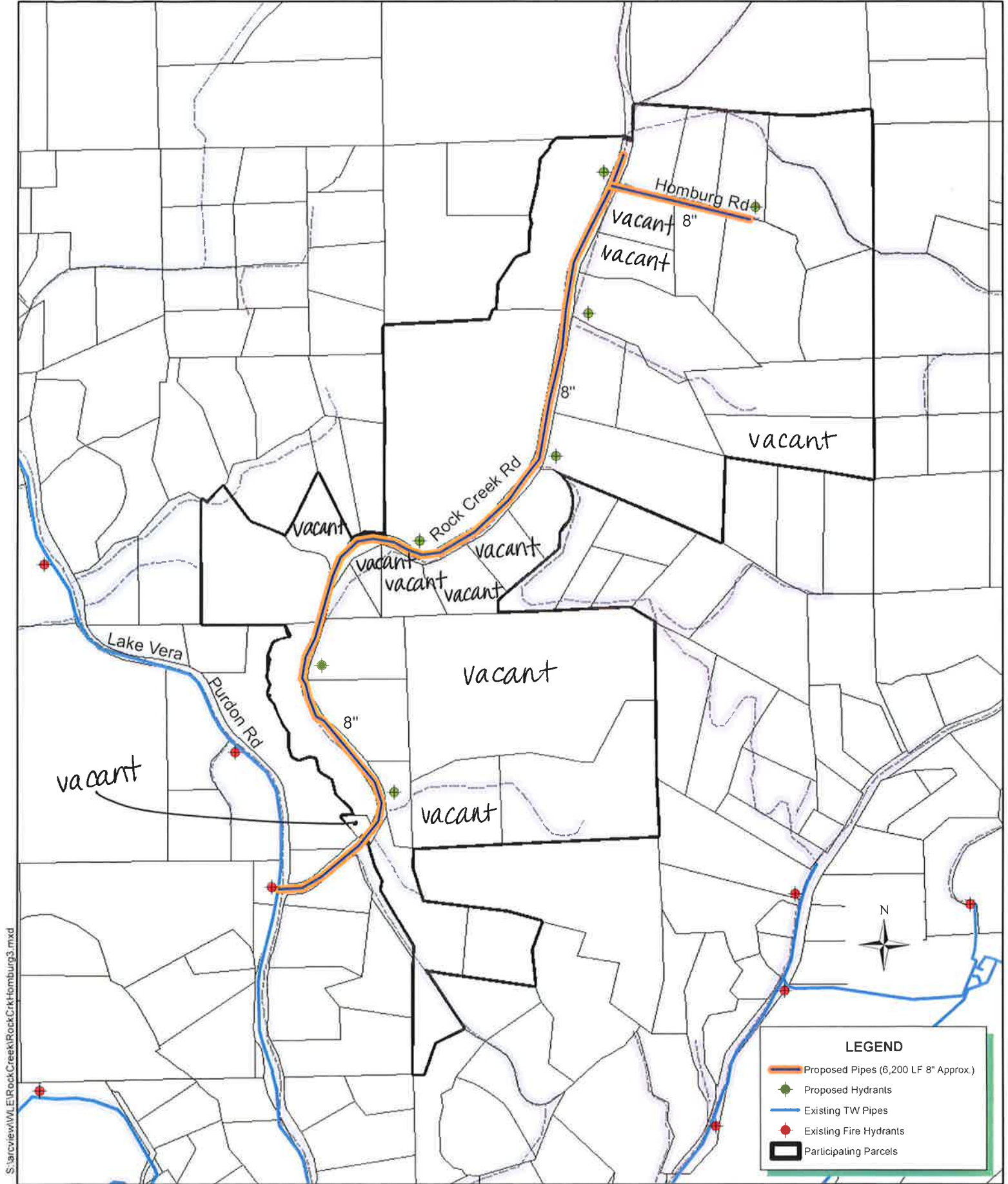
AVERAGE LINEAL FEET OF PIPE PER PARCEL = 172

¹ Public Utility Easement Exists for Rock Creek Road; assumed easement provided for remaining private (gravel) road at end.

² Cost includes patch of roadway not including microsurface on County Maintained Road

³ Cost is for a Categorical Exemption

Cost assumes no tree removal or replacement



S:\arcview\WV\ElRockCreek\RockCrt\Homburg3.mxd

ROCK CREEK DFWLE



Date: 12/22/2016

Drawn By: D. HUNT

NEVADA IRRIGATION DISTRICT

NEVADA COUNTY -- PLACER COUNTY
GRASS VALLEY, CALIFORNIA

Scale: 1" = 700' @ 8-1/2x11

Sheet: 1 of 1