



GM Newsletter

February 2026

From The Desk of Jennifer Hanson, General Manager

Water For Life

BOARD OF DIRECTORS



Chris Bierwagen
Division II
President



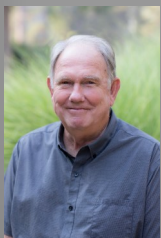
Brad Fowler
Division III
Vice President



Ricki Heck
Division I



Earl Stephens
Division IV



Rich Johansen
Division V

Message from the General Manager



Above: An aerial view of the Crooked Lakes basin that drains into NID's Sawmill Lake, on Jan. 29, 2026. Read the February snow survey story on [Page 3](#).

Our first snow survey of 2026 shows the mountain snowpack at 47% of average, with 9.5 inches of water content compared to the historical 20.2 inches. That's certainly less than we'd like to see, but here's the good news: our reservoirs are in excellent shape. Thanks to the strong winter storms at the end of 2025, storage is the third-highest ever recorded for this time of year. As of February 11, NID reservoirs hold 244,753 acre-feet of water. That is 91 percent of capacity and 120 percent of average.

At first glance, these numbers may seem at odds, but water supply is never about a single storm or month. It's a careful balance of timing, temperature, and storage over the season. Colder storms later this winter could still boost snowpack and improve conditions heading into summer.

For our customers, the outlook remains steady: water supplies are reliable, and no service changes are anticipated based on this first survey. We'll continue to monitor conditions closely and keep you informed every step of the way.

In this edition:

- * Water rates discussions begin. See the study presentation, [Page 2](#)
- * South Yuba Canal Wildfire Defense Project moves forward, [Page 4](#)
- * Board approves Rollins Reservoir depth study, [Page 4](#)
- * Bowman precipitation is 104% of average, [Page 5](#)
- * Total reservoir storage at 120% of average, [Page 6](#)

NID Board launches Water Rate Study review

The NID Board of Directors has begun reviewing a comprehensive Water Rate Study as part of its commitment to provide reliable irrigation water and high-quality drinking water at the lowest possible cost.

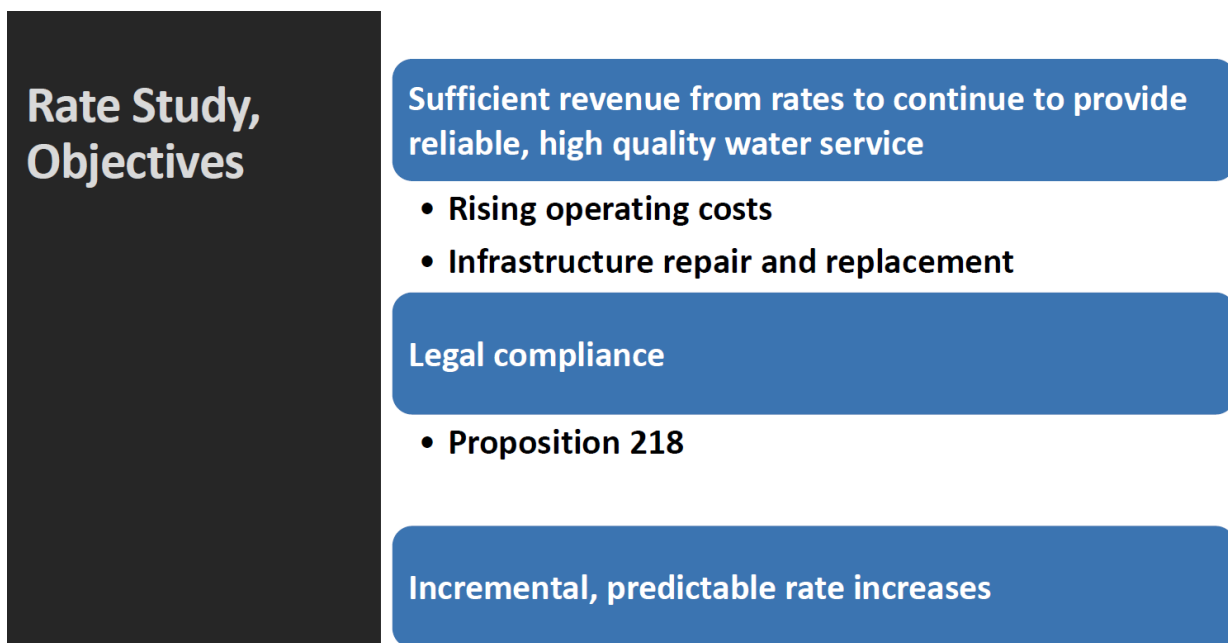
The study takes a close look at the District's current water rates and the actual cost of providing service. That includes day-to-day operations, maintenance, and long-term investments to repair and replace aging pipes, canals, treatment plants, and other infrastructure.

Like many agencies, NID is facing rising costs for materials, energy, and labor. The Board will use the study to determine whether current rates are enough to cover those expenses and continue delivering safe, dependable water.

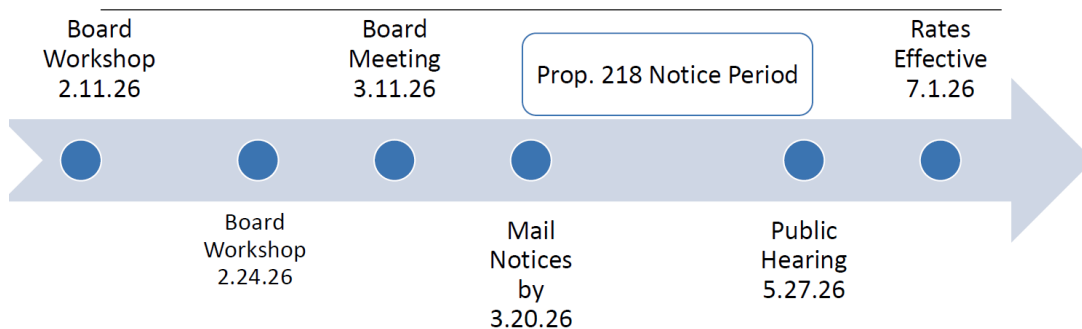
The District will follow all requirements under Proposition 218 when changes to rates are proposed. That means customers will receive advance notice by mail, there will be a public hearing, and the Board will consider public input before making any final decision.

Follow the [NID Rate Adjustment webpage](#) for details and updates.

Read: [Water Rates Study presentation made on Feb. 11 workshop](#)



Next Steps



NID snow survey shows snowpack at 47% of average, reservoir storage remains strong



Above: an NID surveyor measures snowpack using a sampling tube at the English Mountain snow course.

NID February snow survey found the mountain snowpack at 47 percent of average, with an average water content of 9.5 inches compared to the historical 20.2 inches.

Despite the low snowpack, reservoir storage remains high thanks to heavy December storms.

As of Feb. 11, NID reservoirs held 244,753 acre-feet, 91% of capacity and 120% of average for this time of year. Although conditions have been dry since early January, all reservoirs are near full or spilling. In fact, current storage is the third highest on record for this date.

NID conducts snow surveys at varying elevations that supply water to both raw and treated water customers. During the February survey, hydrographers documented the following conditions:

- * Webber Peak (7,800 feet): 37.6 inches of snow, 13.3 inches of water content (Jan. 27)
- * English Mountain (7,100 feet): 29.2 inches of snow, 11.1 inches of water content (Jan. 27)
- * Webber Lake (7,000 feet): 30.6 inches of snow, 9.6 inches of water content (Jan. 2)
- * Findley Peak (6,500 feet): 22.4 inches of snow, 7.6 inches of water content (Jan. 28)
- * Bowman Reservoir (5,650 feet): 19 inches of snow, 6 inches of water content (Jan. 28)
- * Chalk Bluff (4,850 feet, Deer Creek watershed): No snow present as of Jan. 28 (not included in the District average)

Snow water equivalent measures how much water is stored in the snowpack and is a key tool for water managers planning seasonal water supplies.

Snowpack is critical for spring runoff and long-term water supply.

NID will continue monitoring conditions and planning accordingly.



Protecting a critical water supply: South Yuba Canal Wildfire Defense Project

Work moves forward on the South Yuba Canal Wildfire Defense Project, which will reduce wildfire risk around one of the Nevada Irrigation District's most critical water supply corridors.

The project will treat approximately 58 acres along the South Yuba Canal to reduce hazardous vegetation and tree fall risks that could threaten water infrastructure during wildfire events.

On Jan. 20, 2026, NID secured a \$615,000 grant from CAL FIRE to help fund the project, covering 62 percent of the total \$995,000 cost. The District is now beginning the contractor selection process.

The project area is located about 18 miles east of Nevada City near Highway 20. Planned work includes creating a shaded fuel break and removing hazardous trees within 100 feet on both sides of the canal.



Trees encroach on the South Yuba Canal, NID's primary water conveyance infrastructure. The project will focus on removing trees to protect against wildfire.

This will help protect approximately 2.5 miles of elevated flume that delivers all water to the Deer Creek side of NID's system and serves as the sole water supply for customers in western Nevada County.

Survey will assess Rollins Reservoir sediment and water capacity

NID will move forward with a specialized survey of Rollins Reservoir to determine how sedimentation has impacted its water storage capacity.

The Board of Directors has approved a contract for survey services to conduct the Rollins Reservoir Mapping and Bathymetry Survey. Sedimentation is known to reduce reservoir capacity over time, and this survey will measure water depth and map the underwater terrain.

The collected data will be compared with previous surveys and original as-built conditions to evaluate changes in capacity.

In addition, the mapping will include surrounding areas that may be useful for future studies aimed at improving storage capacity.



Bowman Lake

NID has been keeping precipitation records for Bowman Lake (elevation 5,650 ft.) since 1929.

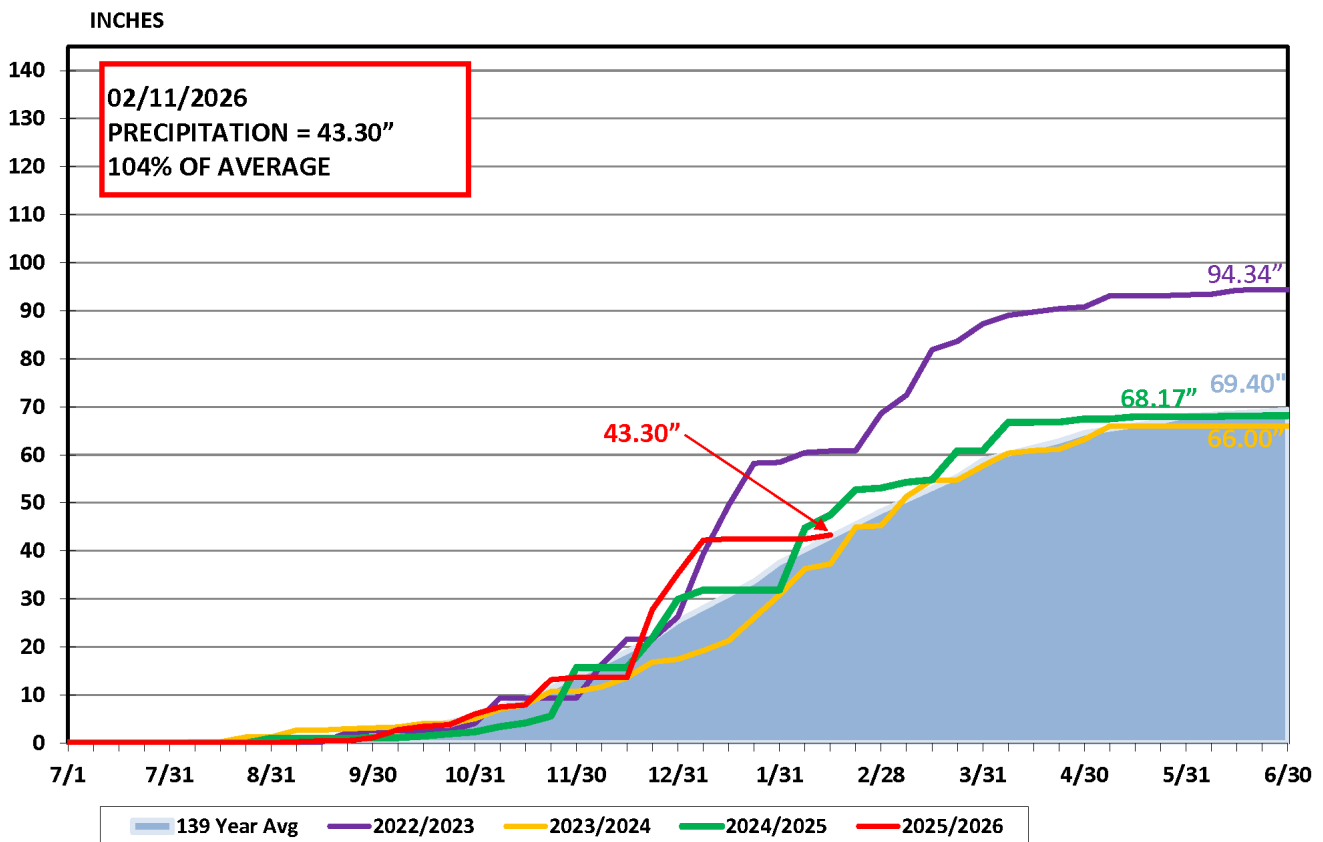
The 69.2-inch annual average of rain and snow at Bowman compares to an annual average of 56 inches at 2,700 feet near Nevada City and 52 inches at 2,400 feet in Grass Valley.

The warm, dry start to winter has limited mountain snowfall. Bowman Lake, at a 5,567 foot elevation, is currently at 91% of its average precipitation.



Bowman Lake

BOWMAN LAKE PRECIPITATION



NID's total reservoir storage is 120% of average

Recent storms boosted total NID reservoir storage to 244,753 acre-feet as of Feb. 11, 2026. That is 91 percent of capacity and 120 percent of a 12-year average.

Reservoirs in this measurement include: Jackson Meadows, Jackson, French, Faucherie, Sawmill, Bowman, and Canyon Creek, as well as Scotts Flat and Rollins.

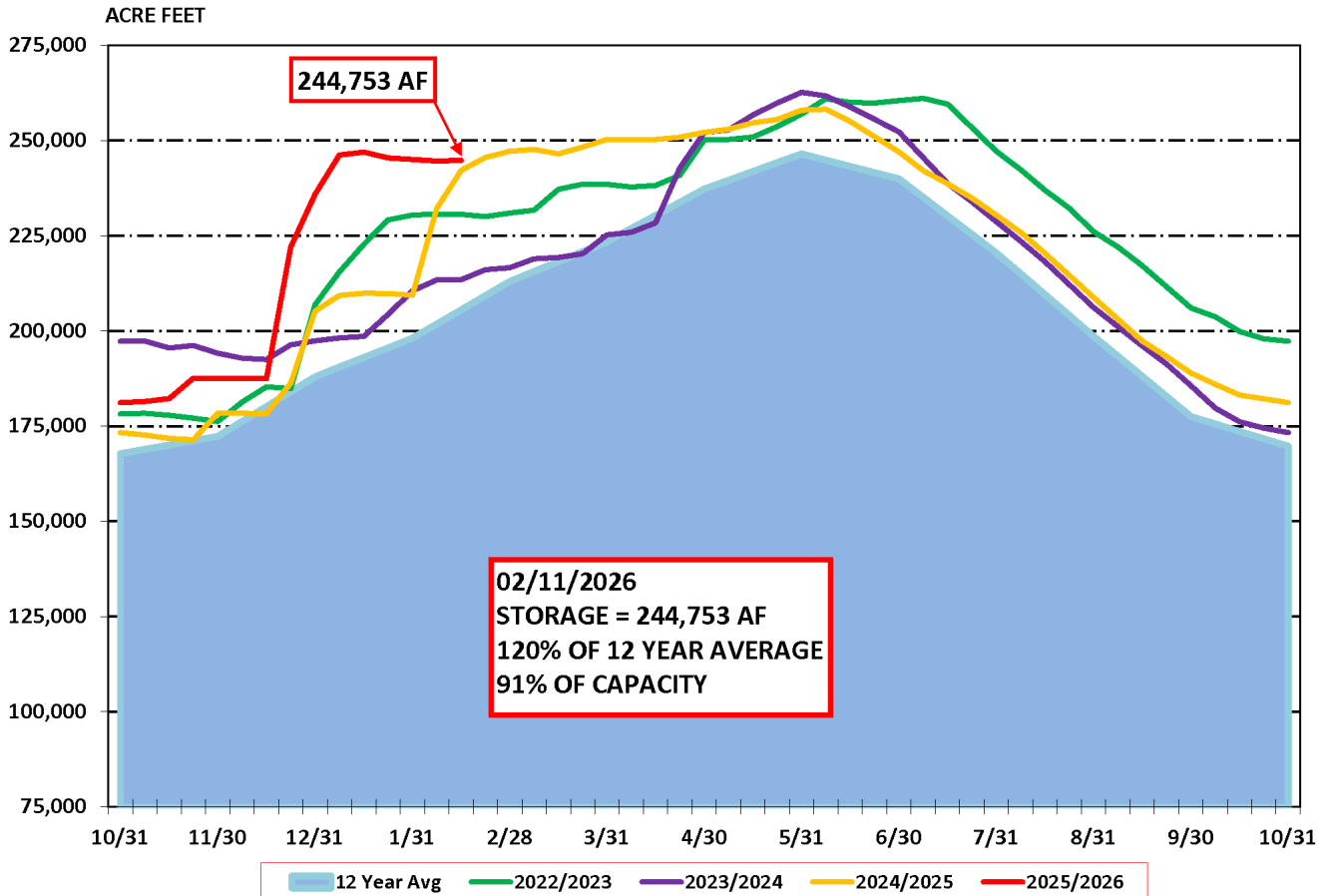
NID's water managers regularly post updates of local reservoir levels. You can see how water levels fluctuate in easy-to-read charts.



French Lake

It's all just a click away on the NID website under [River & Reservoir Data](#).

NID RESERVOIR STORAGE



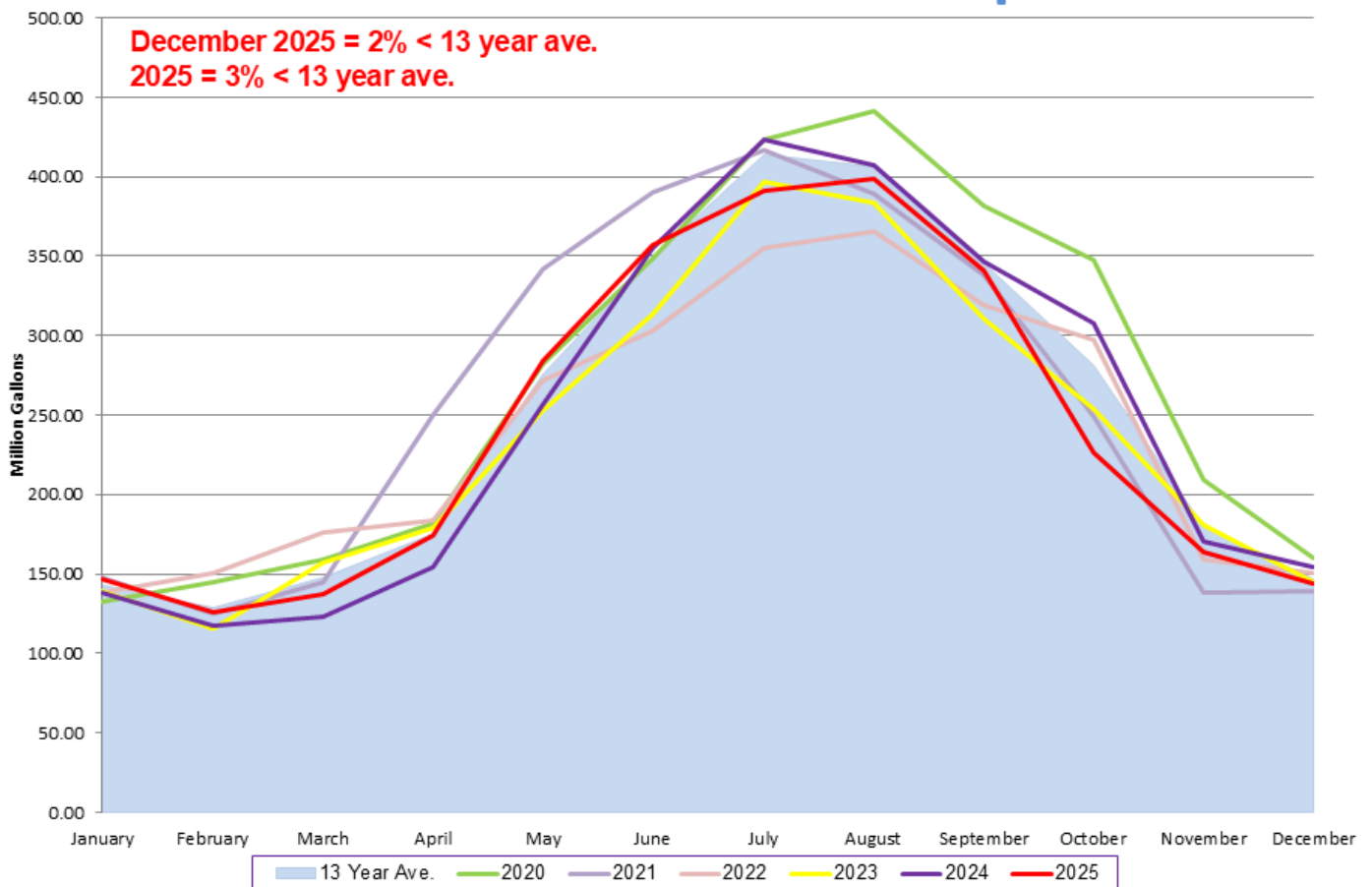
Water conservation: every drop counts

In 2025, treated water customers reduced usage by three percent. While we always aim higher, this progress shows that our community is making efforts to conserve. Small changes, like using water wisely, add up to big impacts over time. Together, we're building habits that protect our water future. Let's keep the momentum going in 2026!

Easy Ways to Save Water Every Day

- Fix leaks promptly. Small drips add up fast
- Water early or late to reduce evaporation
- Turn off the tap while brushing teeth or washing dishes
- Install water-efficient fixtures for long-term savings
- Use mulch in gardens to retain soil moisture.

NID Treated Water Use Comparison



Project Updates - Engineering, Hydropower and Operations

Learn details about and check the latest status of projects, including from the Engineering Department, Maintenance Department, Operations Department, Hydroelectric Department, Information Technology and Watershed Division.

[Engineering & Hydroelectric Project Status Updates](#)

North Auburn Water Treatment Plant Project

The project is boosting efficiency and reliability at the North Auburn Water Treatment Plant. Upgrades include: installation of a new electrical conduit to connect the upgraded Motor Control Center (MCC) panel - the control hub that distributes power and manages pumps - with the treated water storage tanks (clear wells). These pumps will soon feature soft-start controllers, which help reduce wear and tear and improve energy efficiency.

Construction is about halfway complete. Next up: installing the pre-built MCC electrical panel and a new transformer to power the system. These upgrades will help ensure smooth operations and dependable water service for years to come.



Meetings & Events



Special Board of Directors Meeting

Wednesday, February 24, 2026 (3-5 pm)
Placer County Planning Commission Chambers,
3091 County Center Drive, Auburn

*** Dates and times subject
to change. Please check
nidwater.com for updates*

Board of Directors Meeting

Wednesday, February 25, 2026
NID Main Office
1036 W. Main Street, Grass Valley

Board of Directors Meeting

Wednesday, March 11, 2026
NID Main Office
1036 W. Main Street, Grass Valley

**HAPPY
PRESIDENT'S
DAY**

The NID Business Center will close on Feb. 16, 2026

designed by freepik