



GM Newsletter

January 2026

From The Desk of Jennifer Hanson, General Manager

Water For Life

BOARD OF DIRECTORS



Chris Bierwagen
Division II
President



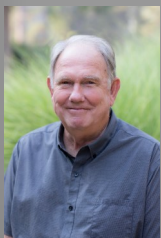
Brad Fowler
Division III
Vice President



Ricki Heck
Division I



Earl Stephens
Division IV



Rich Johansen
Division V

Message from the General Manager



Left: Van Giesen Dam (Combie Reservoir) spills during a storm on Dec. 24, 2025.

As we begin the new year, I'd like to share an update on our local water supply and what recent winter weather means for our community.

Thanks to recent storms, Nevada Irrigation District reservoirs are measuring storage at 128 percent of a 12-year average and 91 percent of capacity. While this is encouraging, continued cold temperatures are essential to building snowpack. Snowpack acts like a frozen sponge, storing winter precipitation and slowly releasing it as melt-water. This natural process replenishes rivers and reservoirs and helps supply farms, businesses, and families through the dry summer months.

Next month, NID will begin its annual snow surveys. These surveys provide critical insight into how much water we can expect later in the year. Results will be shared on the GM Newsletter and on the NID website beginning in early February.

If you'd like to keep track of reservoir levels in real time, our team monitors conditions and posts daily updates. You can view current reservoir storage and local waterway updates on our website.

As always, NID remains committed to delivering safe, reliable water to our communities today and for generations to come.

In this edition:

- * NID begins 2026 urban and agricultural water management plans, [Page 2](#)
- * Winter conservation: measure your water use calculator, [Page 2](#)
- * Bowman precipitation is 138% of average, [Page 3](#)
- * Total storage update: reservoirs are 128% of 12-year average, [Page 4](#)
- * Engineering update on the replacement of the Scotts Flat Spillway, [Page 5](#)

NID begins 2026 Water Management Plan Updates

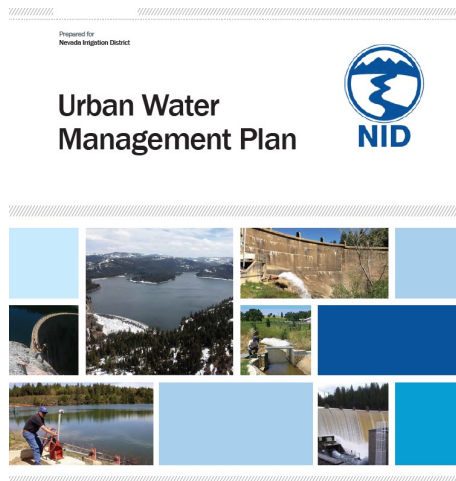
The Nevada Irrigation District is updating its 2026 Urban and Agricultural Water Management Plans, as required by the state. Because NID provides both drinking water and agricultural water, it prepares both plans.

The Urban Water Management Plan (UWMP) outlines how NID will meet customer water needs over the next 20 years, including supply and demand projections, conservation programs, drought planning, and water shortage measures. The Agricultural Water Management Plan (AWMP) provides similar information for NID's agricultural customers, covering water use, conservation, and management strategies.

Both plans are due to the state every five years, with the next Agricultural Management Plan due by April 30, 2026, while the Urban Water Management Plan is to be completed by July 31, 2026.

NID will host public meetings for each plan to gather input before Board consideration. A Draft Agricultural Management Plan is anticipated to be available for public review by mid-February with a Board Workshop on March 25, 2026. The Draft Urban Water Management Plan is anticipated to be released in mid-March with a Board Workshop anticipated on June 10, 2026.

[Learn more and view the 2020 plans](#)



Winter water conservation – let's save water together

Conservation year-around is important to ensure there is enough water for our community's demand for water, now and during the coming decades. Using water efficiently also saves money for you personally, and goes a long way to reduce waste, protect watersheds, and mitigate the impacts of drought and climate change.

Water conservation tends to be a priority during the warmer months, when water levels in reservoirs are noticeably lower. However, water conservation needs to be a year-round goal.

Check out the "[Measure Your Water Use Calculator](#)"

Click on the link and answer the questions to find out how much water your home uses and how to save water, energy and money.



Bowman Lake

NID has been keeping precipitation records for Bowman Lake (elevation 5,650 ft.) since 1929.

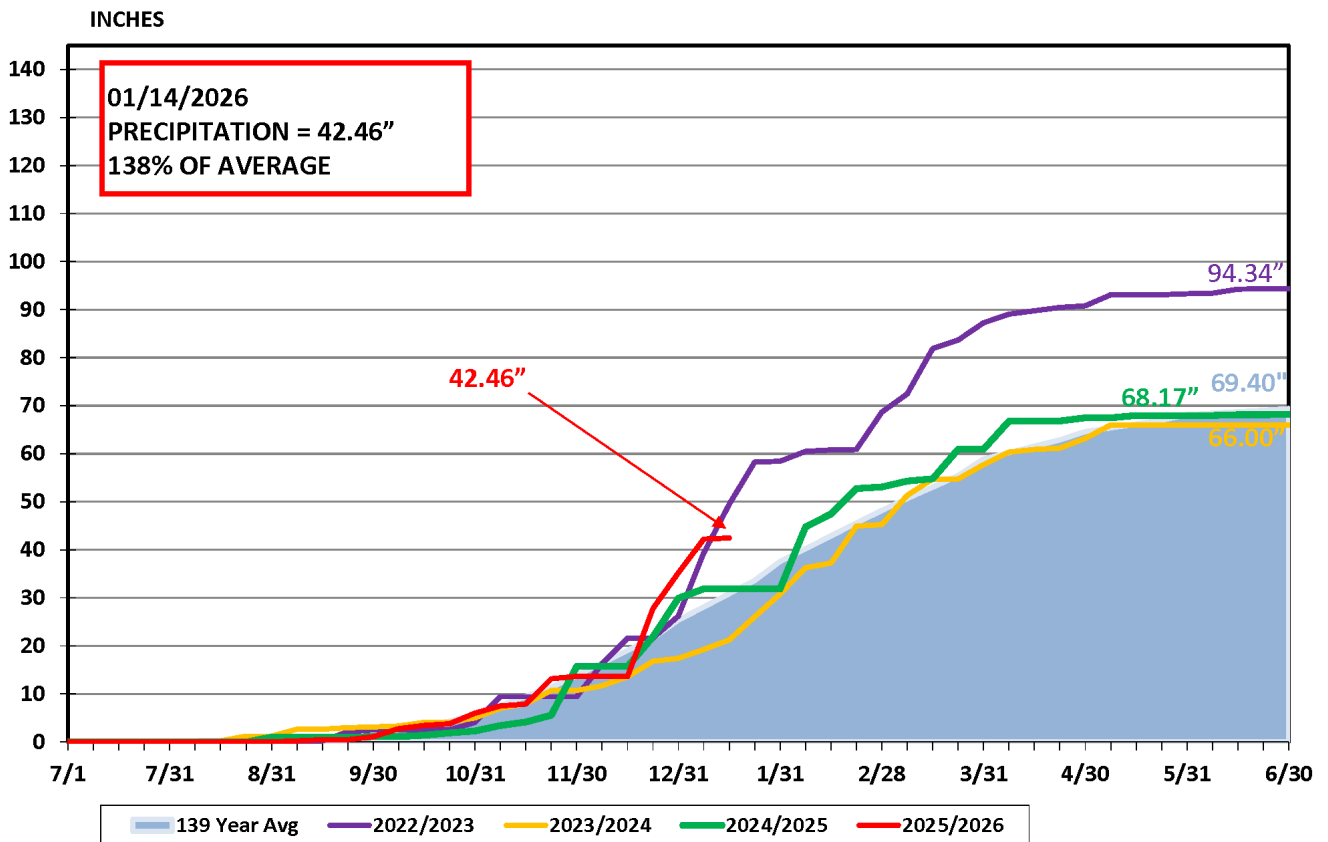
The 69.2-inch annual average of rain and snow at Bowman compares to an annual average of 56 inches at 2,700 feet near Nevada City and 52 inches at 2,400 feet in Grass Valley.

The warm, dry start to winter has limited mountain snowfall. Bowman Lake, at a 5,567 foot elevation, is currently at 91% of its average precipitation.



Bowman Lake

BOWMAN LAKE PRECIPITATION



NID's total reservoir storage is 128% of average

Recent storms boosted total NID reservoir storage to 246,953 acre-feet as of Jan. 14, 2026. That is 91 percent of capacity and 128 percent of a 12-year average.

Reservoirs in this measurement include: Jackson Meadows, Jackson, French, Faucherie, Sawmill, Bowman, and Canyon Creek, as well as Scotts Flat and Rollins.

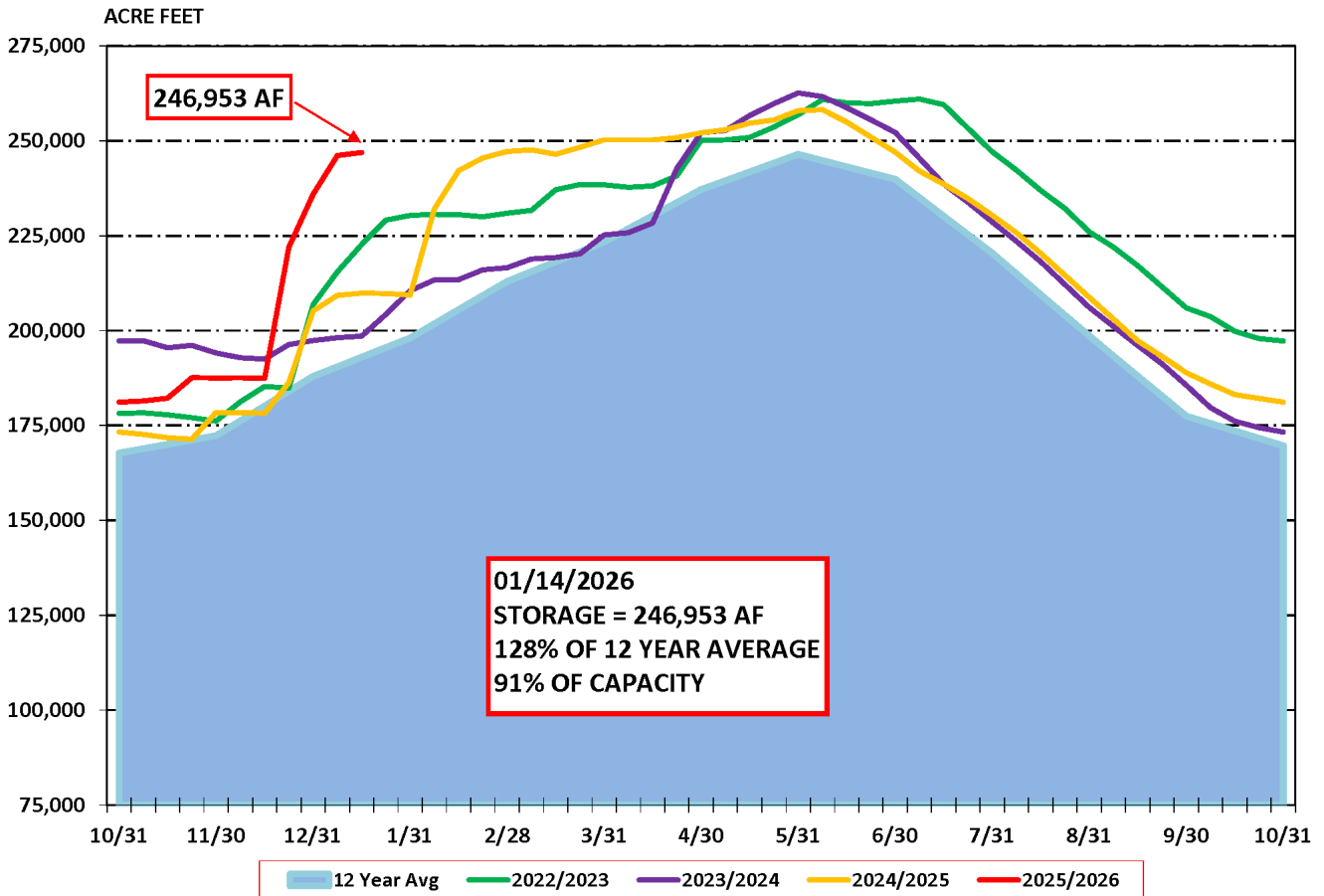
NID's water managers regularly post updates of local reservoir levels. You can see how water levels fluctuate in easy-to-read charts.



French Lake

It's all just a click away on the NID website under [River & Reservoir Data](#).

NID RESERVOIR STORAGE



Project Updates - Engineering, Hydropower and Operations

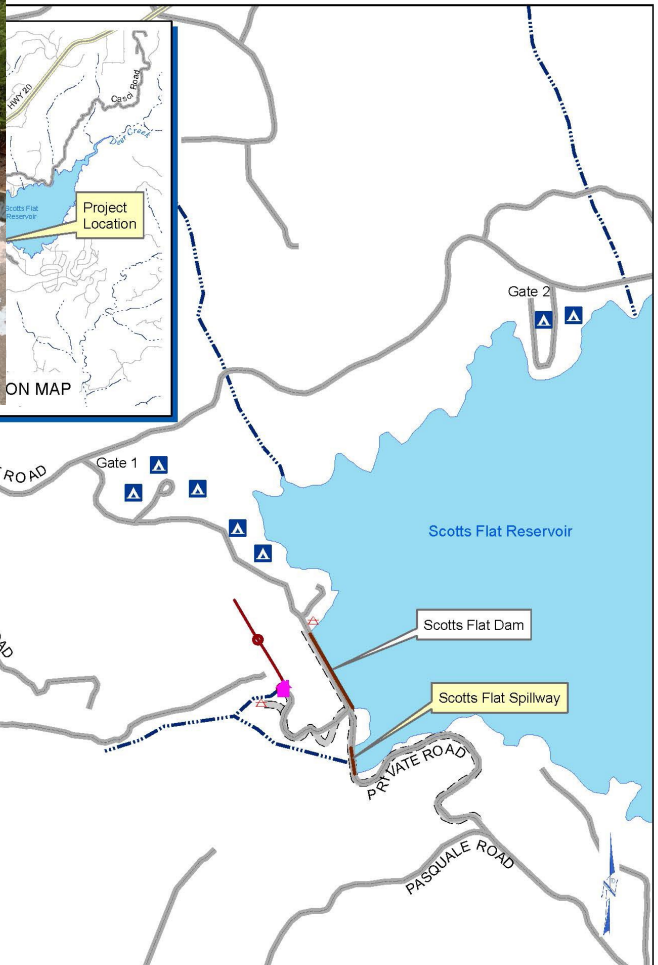
Learn details about and check the latest status of projects, including from the Engineering Department, Maintenance Department, Operations Department, Hydroelectric Department, Information Technology and Watershed Division.

[Engineering & Hydroelectric Project Status Updates](#)

Scotts Flat Spillway Replacement Project

Purpose: This project will focus on the replacement of the spillway chute with a rectangular chute geometry, i.e., new floor slabs with new vertical side walls, and a new sub-drain system is the superior alternative.

Status: The project is currently in the design process, and a thorough and complete California Environmental Quality Act (CEQA) and National Environmental Policy Act (NEPA) evaluations are underway. NID will post the Draft documents once completed and the comment period begins.



Damage caused by spalled concrete



Date: 9/15/2021
Drawn By: NID

SCOTT'S FLAT SPILLWAY
NEVADA IRRIGATION DISTRICT
NEVADA COUNTY - PLACER COUNTY
GRASS VALLEY, CALIFORNIA

Scale: NO SCALE
Sheet: 1 of 1

**Meetings
& Events**



Board of Directors Meeting
Wednesday, January 28, 2026
NID Main Office, Grass Valley

Board of Directors Meeting
Wednesday, February 11, 2026
NID Main Office, Grass Valley

Board of Directors Meeting
Wednesday, February 28, 2026
NID Main Office, Grass Valley

*** Dates and times subject to change.
Please check nidwater.com for updates*



★ **MLK DAY** ★

MARTIN LUTHER KING JR.

*“I think I have discovered
the highest good. It is love.”*

**The NID Business Center
will be closed on
Jan. 19. 2026**