



GM Newsletter

February 2025

From The Desk of Jennifer Hanson, General Manager

Water For Life

BOARD OF DIRECTORS



Ricki Heck
Division I
President



Chris Bierwagen
Division II
Vice President



Brad Fowler
Division III



Earl Stephens
Division IV



Rich Johansen
Division V

Message from the General Manager

It's quite the sight to see reservoirs brimming and dams spilling. The latest round of atmospheric rivers has brought much-needed snow and rain, and now NID's reservoirs contain more water than we've seen in the past five years. Total storage is at 118 percent of an 11-year average.

Yet, all is not as it seems. We are yet again facing a water shortage because of prolonged repairs to Lake Spaulding powerhouses by Pacific Gas and Electric Company (PG&E) repairs. Until those repairs are completed and tested, water flowing to NID foothill reservoirs will be limited.

The water situation will be similar to last summer's water emergency with extremely low water levels at both Rollins and Scotts Flat reservoirs. The bottom line is in the high country, our reservoirs are filled; we have more than an ample supply. But, just like last year, we will be unable to get that water down to the foothills for use by our customers.

Knowing what we will be facing, the NID Board of Directors has continued the Emergency Water Shortage, which will run through the duration of PG&E repairs. Those include a call for 20 percent mandatory water conservation by District customers. Read more in this edition of the newsletter.



Rollins Dam spills on Feb. 18, 2025

In this edition:

- * Board of Directors continue emergency water shortage, [Page 2](#)
- * Water conservation required—reduce by 20%, [Page 3](#)
- * Water supply update - reservoirs full, 120% of average, [Page 7](#)
- * Boat launches closed until May, quarantine program announced, [Page 4](#)
- * In the Field: Newtown canal improvements, [Page 8](#)

Emergency Water Shortage continues

Limited snowmelt will reach foothills

Despite the ample amounts of snow and rain this winter, the NID Board of Directors has continued the water shortage emergency and issued a warning of low water levels this summer.

The decision was in response to the ongoing water supply infrastructure repairs at Pacific Gas and Electric Company's (PG&E) Lake Spaulding facilities. The repairs will once again disrupt water supply to NID facilities for the spring and summer of 2025.

As a result, similar to last summer's water emergency, flows will again be limited, resulting in extremely low water levels at both Rollins and Scotts Flat reservoirs this summer. Both reservoirs will decline significantly to drought-like levels by July, impacting both water supply and recreational activities.

"The District has conducted a comprehensive analysis of current and projected reservoir conditions, hydrology, and snow-pack data," said Chip Close, NID Director of Water Operations. "Our assessments tell us that the available water supply for 2025 will likely be comparable to the conditions experienced during the 2024 irrigation season when levels dropped."

NID's Board adopted a resolution with an initial declaration of emergency on March 27, 2024. Another resolution on June 26, 2024, established mandatory 20-percent conservation measures.

Anticipated 2025 Outage Timing

Spaulding 1 Horn B repairs to begin March 3, 2025

- Work anticipated to continue through August 2, 2025
- PG&E expects limited flows available once testing starts (tentatively late June)

Spaulding 2 Repairs

- Repairs to the powerhouse not expected until 2026 or 2027
- PG&E crews have designed and installed a bypass around the powerhouse
- Bypass intended to allow limited flows into the SYC
- Bypass is still undergoing flow testing
- Bypass is critical to minimizing rotating canal outages later in the season

February's resolution extends the previous emergency resolutions through the duration of PG&E repairs. Those include measures to address how the District operates and actions customers need to take.

There are several directives:

- * Surplus water to areas outside the District's water right boundaries will not be available until full restoration of flows through PG&E's facilities is available.
- * Grass Valley and Nevada City are guaranteed water deliveries, because although they are not part of the District's service area, the cities are located within the water rights boundaries.
- * Raw Water customers who voluntarily reduced irrigation water purchases will remain at the reduced purchase allotment until emergency conditions subside.
- * All NID customers must achieve a cumulative 20 percent reduction in treated water and raw/irrigation water use as compared to usage in 2023.
- * The water shortage declaration will remain in effect until water delivery in satisfactory volumes has been re-established by PG&E. The NID Board of Directors will end the state of emergency when water conditions improve to acceptable levels.

Call for Conservation

NID customers are requested to reduce their water use by 20 percent this year.

While most customers stepped up last year to conserve, we all need to double-down this year to protect our limited water supply.

Customers have found that beginning to use water efficiently is as simple as making small habit changes to protect the resource for our community. These include simple practices, such as turning off the tap while brushing teeth and reducing the amount of water in gardens and landscaping.



With the continued water shortage emergency, certain water restrictions will remain. These include commonsense conservation practices:

- * Keep water on your property: no runoff is allowed from watering that flows onto adjacent property, walkways, roadways, parking lots, and the like.
- * Don't water outdoor landscapes within 48 hours after a rainfall.
- * Put a nozzle on it: when you wash your car, the hose must be fitted with a spray nozzle or attached device that cuts off water when not in use.
- * No fake water features: don't fill a fountain or other decorative water feature, except where the water is part of a recirculating system.
- * Ask for a glass of water: drinking water won't be automatically poured in restaurants. Thirsty? Not a problem. Water is available upon request.

[Wintertime conservation tips, click here](#)



New protocol for boat launching at Rollins, Scotts Flat reservoirs

Launches re-open on May 1

Boat launches at foothill reservoirs continue to be closed to motorized watercraft as a precaution to prevent the spread of the highly invasive golden mussel. These bivalves pose a real risk to NID infrastructure if introduced into local waters.

NID will implement a new tagging program that requires all motorized watercraft to pass a 30-day quarantine or be decontaminated prior to entry into Rollins and Scotts Flat reservoirs.

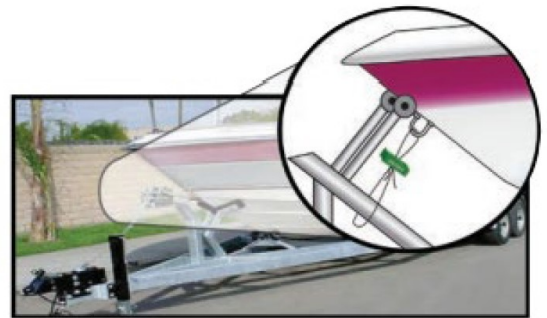
The way it works: motorized watercraft can come to Scotts Flat or Rollins, and a quarantine seal will be applied for 30 days. During that time a vessel will not be permitted to launch. After the quarantine, the seal will be removed by authorized staff, and the vessel can return to the water.

When exiting the water, boaters will be offered a re-entry seal and receipt, which will allow the boat access to Rollins or Scotts Flat without an additional quarantine.

“The boat launches are set to open May 1, 2025 to motorized watercraft. Our goal is to start tagging boats the week of March 17,” said Monica Reyes, Director of Recreation. “Thank you in advance for cooperating with our inspection and decontamination process. By working together, we can prevent the introduction of this highly damaging mussel to our waters.”



Golden mussels



Example of a properly installed boat seal.



Golden mussels colonize a water pipe at a hydroelectric plant in Brazil in 2021.

Mature golden mussels were found at the Port of Stockton in October 2024, and State officials called the situation a "significant immediate threat." Once present, infestation can quickly cause devastating damage. The mussels form colonies on hard surfaces, impeding water flow, clogging pipes, and ruining watercraft motors.

“We understand the impact this has to recreation, but protecting the reservoirs’ long-term health is our top priority. By taking protective measures now, we can prevent costly and irreversible damage to our ecosystem and water infrastructure,” Reyes said.

Specifics of NID’s new tagging program will be released in the next couple of weeks. [Check NID’s Recreation webpage for updates.](#)

New check structure on Newtown Canal

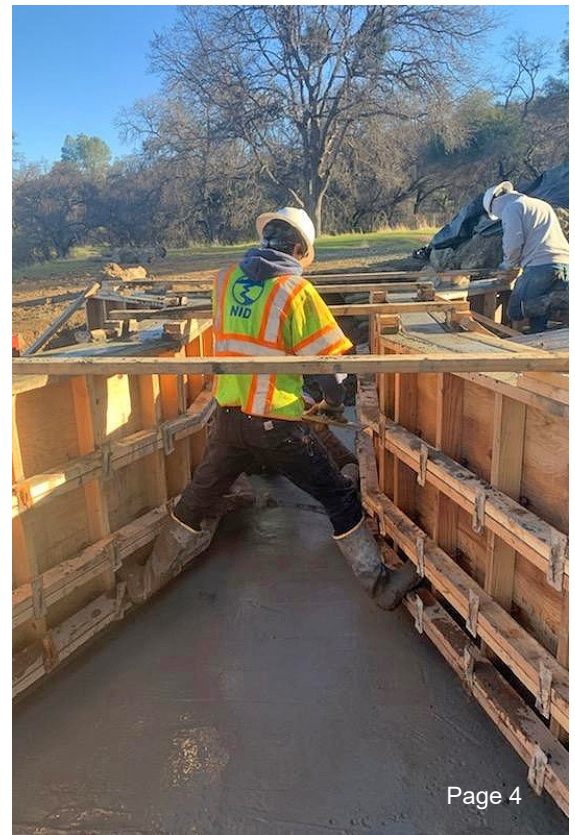


An NID Utility Worker puts the finishing touches on the construction of a check structure in Newtown Canal.

To improve the flow to customers in the Newtown Canal, NID has just finished a project to build a check structure. The structure will serve as a little dam to raise the water level within a section of the main canal. That will provide adequate head pressure to divert sufficient water to customer boxes.

(Right) During construction, an NID worker straddles freshly poured concrete to fortify a wooden form.

(Below) The hole in the check structure directs water to a red customer box. From there, the water flows to the customer's property.





Bowman Lake

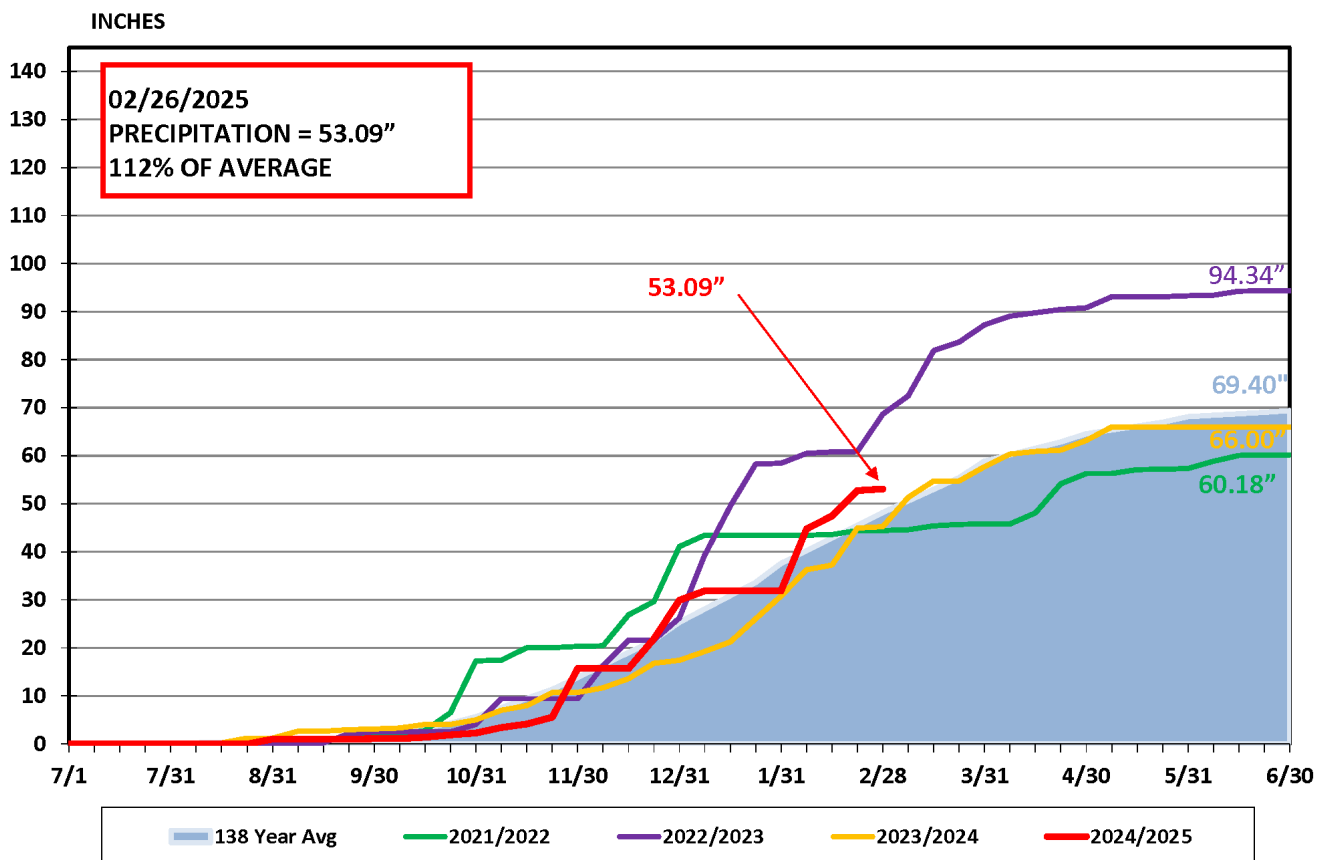
NID has been keeping weather records for Bowman Reservoir (elevation 5,650 ft.) since 1929.

The 69.2-inch annual average precipitation at Bowman compares to an annual average of 56 inches at 2,700 feet near Nevada City and 52 inches at 2,400 feet in Grass Valley.

Precipitation is measured for the 12-month period beginning July 1 and ending June 30.

As of Feb. 26, 2025, 53.09 inches of precipitation had fallen at Bowman. That is 112 percent of average.

BOWMAN LAKE PRECIPITATION



NID's total reservoir storage is 118% of average

Total reservoir storage was 247,180 acre-feet as of Feb. 26, 2025. That is 118 percent of an 11-year average.

NID's water managers regularly post updates of reservoir levels. You can see how water levels fluctuate in easy-to-read charts.

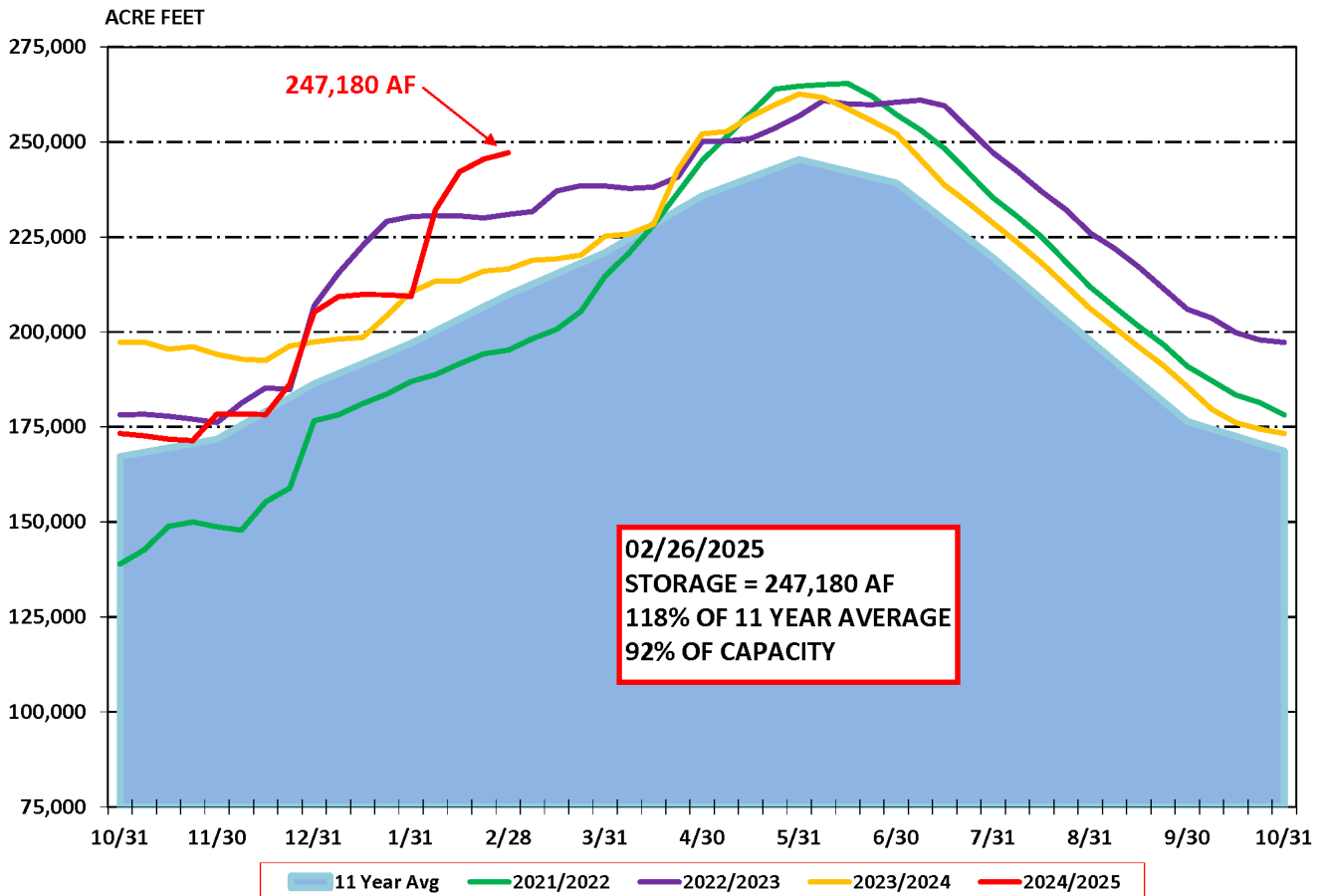
Lakes include: Jackson Meadows, Jackson, French, Faucherie, Sawmill, Bowman, and Canyon Creek, as well as Scotts Flat and Rollins.



Van Giesen Dam (Combie Reservoir spills on Feb. 6, 2025)

Interested in the latest information? It's all just a click way on the NID website under [River & Reservoir Data](#).

NID RESERVOIR STORAGE



Project Updates - Engineering, Hydropower and Operations

The NID Engineering Department has a number of projects in various phases of construction.

Project Status Reports provide project information, planner information, and a brief project description. Be sure to sign up for email news alerts about projects.

[2025 Engineering & Hydroelectric Project Status Updates](#)

Project: Maben Canal Phase IV Improvement Project nears completion

The Maben Canal Phase IV Improvement Project includes the encasement of open portions of an existing canal and the enlargement of an existing siphon.

The canal is located on the backside of private properties with difficult access for maintenance. The current section of the canal is undersized and does not meet downstream demands.

Roughly 600 feet of open canal will be converted into an 18-inch diameter, buried pipe and a 470-foot long, 12-inch diameter siphon (pipe) will be replaced with a 24-inch PVC pipe to realize the required flow capacity. A control valve and flow-measuring flume will be added at the end of the project to provide control and measurement of flow.



The project will provide uninterrupted service and lift the moratorium to allow water service for new customers. The canal lies near the southern borders of Nevada County, along Lime Kiln.

(Left) An NID construction inspector points to a nearly 40-year old siphon that is being replaced

(Below left) A canal will be encased in 18-inch pipe

(Below right) A canal flows along the back of properties



Meetings & Events



Board of Directors Meeting
Wednesday, March 12, 2025
NID Main Office, Grass Valley

Board of Directors Meeting
Wednesday, March 26, 2025
NID Main Office, Grass Valley

*** Dates and times subject to change.
Please check nidwater.com for updates*

CALIFORNIA F.I.R.E. FIX

With each passing year, wildfires burn more land, destroy more homes, and threaten our water. We need a California F.I.R.E. Fix now.

Protecting our forests, water and communities is a priority. NID is teaming up with other water agencies to advocate for Federal funding and public-private partnerships to do just that. [Watch the short video to learn more](#)

