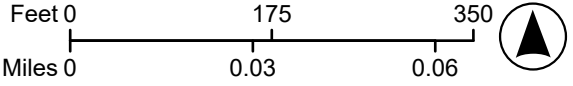
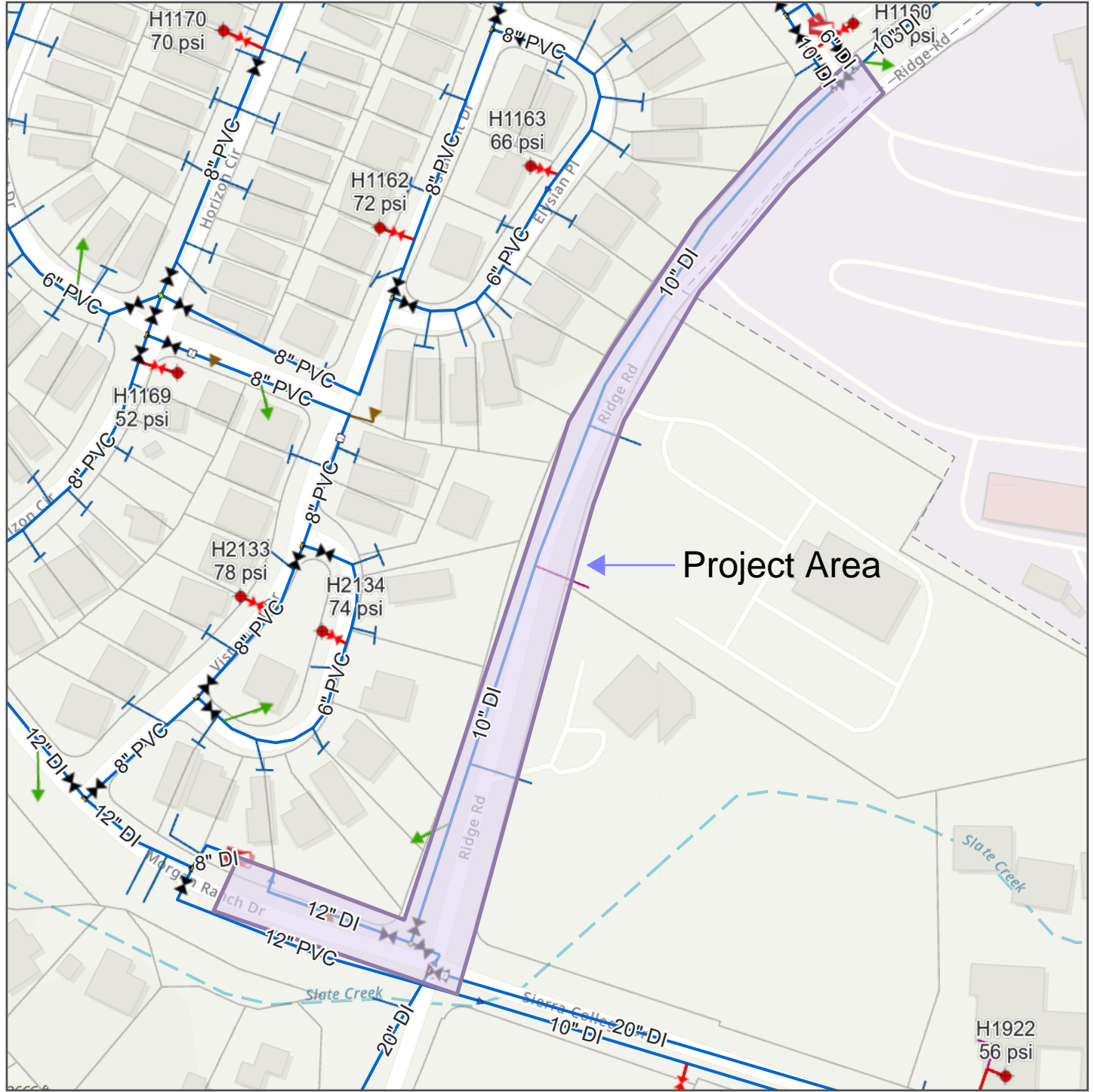


Sources: Esri, Vantor, Airbus DS, USGS, NGA, NASA, CGIAR, N Robinson, NCEAS, NLS, OS, NWA, Geodatasystelsen, Rijkswaterstaat, GSA, Geoland, FEWA, Intermap, and the GIS user community. Sources: Esri, TomTom, Garmin, FAO, NOAA, USGS, (c) OpenStreetMap contributors, and the GIS User Community. Sources: Esri, TomTom, Garmin, FAO, NOAA, USGS, © OpenStreetMap contributors, and the GIS User Community and the Nevada Irrigation District. The GIS data provided here are for private use only. The data contained within is for general informational purposes and may be incomplete, inaccurate, or subject to change. No guarantee or warranty, express or implied, is made regarding the accuracy, reliability, or completeness of the data. By accessing and using these data, users agree to hold harmless the creators, distributors, and associated parties from any claims arising from the use of the GIS data.



Ridge Road Pipeline Replacement Site Map

- Fire Hydrant
- Hydrant
- Pressure Reducing
- Tee
- Reducer
- Coupling
- Cross
- TW Valve System
- Air Release
- Blowoff
- TW Service Line Residential Service
- TW Service Line Fire Service
- Fire Hydrant Lateral Hydrant Lateral
- TW Valve Lateral Blow Off Service
- TW Valve Lateral Air and Vacuum Service

- PRV
- Vault
- TW Pipe by System TW Pipe EG System
- Parcels Nevada County Parcel



Printed: 5/7/2026 11:00 AM