



GM Newsletter

October 2025

From The Desk of Jennifer Hanson, General Manager

Water For Life

BOARD OF DIRECTORS



Ricki Heck
Division I
President



Chris Bierwagen
Division II
Vice President



Brad Fowler
Division III



Earl Stephens
Division IV



Rich Johansen
Division V

Message from the General Manager

As we wrap up the irrigation season, I'm pleased to report that NID's water outlook remains strong. As of October 8, our reservoirs are holding 185,932 acre-feet of water, which is 69 percent of capacity and 107 percent of the 11-year average.

With the irrigation season closing on October 15, canal flows to raw water customers have been shut off until spring. Treated water customers, however, will not see a change. The water will keep flowing.

We often say NID's water supply begins as Sierra Nevada snowmelt from the headwaters of the Middle Yuba River. But where exactly is that?

Environmental Resources Administrator Neysa King recently stood in the riverbed of the Middle Yuba at English Meadow. It's quiet and dry now, but after a snowy winter, meltwater from surrounding streams and creeks converges here, creating the headwaters that mark the start of NID's water journey downstream.



In this edition:

- * NID participates in annual Trades Expo for high school students, [Page 2](#)
- * Fall mulching with an NID rebate to cover cost of materials, [Page 3](#)
- * Total storage update: reservoirs are at 107% of average, [Page 6](#)
- * Capital Projects: Mid-Year Report, [Page 7](#)

NID promotes trade careers to local high school students

The next generation of skilled workers got a close-up look at hands-on careers when NID participated in the third annual Nevada County Contractors Association Trades Expo on October 8. An estimated 600 high school students attended the event, which was held at the Nevada County Fairgrounds.

The day introduced students to a wide range of construction-related job opportunities, including electrical work, plumbing, landscaping, and roofing. NID representatives talked with students about the many career paths available within the District and invited them to try out some real-world activities.

This year's NID booth featured skills challenges and demonstrations using District equipment such as a snowcat, mini excavator, and an electric vehicle service truck. Students also explored a water system display created by NID electricians that included a working pump, control boards, meter, and display screen.

The Trades Expo is a collaborative effort between the Nevada County Contractors Association, the County of Nevada, and local school districts such as the Nevada Union Joint High School District. The annual event is designed to inspire young people to explore rewarding careers in construction and skilled trades. NID was proud to be a sponsor.



Above far left: students climbed aboard an NID SnoCat that District crews rely on to reach upper-elevation water facilities during the snowy season.

Above: a student showed real skill on a mini excavator, expertly stacking three stumps like a pro.

Left: another student tries out a press tool, which creates secure pipe connections with ease.

Fall Mulching: A small step with big impact



NID offers mulch rebates

NID customers can receive up to \$50 back as part of the District's water efficiency efforts, which encourage sustainable choices that benefit both yards and the community's water supply.

The program is available now at www.nidwater.com/rebates.

For voucher requests or questions about NID's other rebate programs, contact Kaycee Margherita at 530 273-6185 ext.1244 or email strongk@nidwater.com.

Fall is the perfect time to wind things down in the garden by cutting back plants and prepping your landscape for winter. One of the simplest and most effective ways to do that is with mulch.

Think of mulch as a warm blanket for your plants. It protects roots, improves soil, and helps retain moisture during the colder, drier months. Even better? NID customers can receive up to \$50 back through the District's Mulch Rebate Program, making it easier than ever to prep your garden while saving a little money.

Why Fall Mulching Matters

As nights grow cooler and weather turns unpredictable, mulch does more than just look tidy. It insulates roots from freezing, suppresses winter weeds before they sprout, and helps stabilize soil temperature. By reducing sudden temperature swings, mulch keeps soil life active and plants healthy through winter dormancy.

Wait Until the First Frost

The ideal time to apply mulch is after the first frost but before the ground freezes. This timing allows soil to cool naturally while locking in protection for the colder months ahead.

Approximate first frost dates:

- Grass Valley – around November 5
- Nevada City – around November 10
- Penn Valley – between November 11–20
- Auburn & Lincoln – around December 1

(These estimates come from the Old Farmer's Almanac and NOAA data)

Mulching is a simple fall task that pays off with healthier plants, a better-looking yard, and long-term water savings. With NID's rebate program, it's also a smart way to save money while caring for your landscape.



[Read more about fall mulching and the NID rebate](#)

Mulch comes in different types. Organic mulches, made from plant materials, break down over time to enrich the soil. Examples include bark mulch (left) and shredded cedar mulch (right).



NID water conservation incentives and rebates

- * **Mulch Rebate Program:** Receive up to \$50 to purchase mulch from the vendor of your choice.
- * **Toilet Rebate Program:** NID treated water customers can get financial incentive to replace older toilets with high-efficient, water-saving toilets
- * **Raw Water Storage Tank Rebate:** The District' Raw Water Storage Tank Rebate Program was developed to help customers improve their irrigation water system reliability through side storage. The minimum storage tank allowed through the rebate program is 500 gallons.
- * **Turf Removal Rebate:** NID's Turf Removal Rebate Program provides financial incentive to encourage residential treated water customers to removal turf grass and replace it with water efficient landscape. The rebate amount per residential meter is \$1 per square foot of converted turf up to \$1,000.

Water Conservation

What you can do to save water

Use water as efficiently as possible. When it comes to conservation, small changes can make a big impact. Simple actions -- like shortening your showers by a minute or two, cutting back on outdoor watering, and fixing leaks right away -- can save gallons of water each day.

Don't forget these practices:

- * **Keep water on your property:** no runoff is allowed from watering that flows onto adjacent property, walkways, roadways, parking lots, and the like.
- * **Put a nozzle on it:** when you wash your car, the hose must be fitted with a spray nozzle or attached device that cuts off water when not in use.
- * **No fake water features:** don't fill a fountain or other decorative water feature, except where the water is part of a recirculating system.
- * **Ask for a glass of water:** drinking water won't be automatically poured in eating or drinking establishments. Thirsty? Not a problem: water is available upon request.
- * **Traveling? Forego daily washed towels and sheets:** hotel and motel operators will provide guests with the option of not having towels and linens laundered daily. Choose to save water by not having washable items changed every 24 hours.

Many people have reduced the amount of water used in their gardens and landscaping, and they have made lifestyle adjustments, such as turning off the tap while brushing teeth to save 8-10 gallons.

Finally, switching out old, inefficient plumbing fixtures with new ones with water-saving features that are certified to use at least 20 percent less water.

Using water efficiently is as simple as making small habit changes to protect the resource for our community.



Bowman Lake

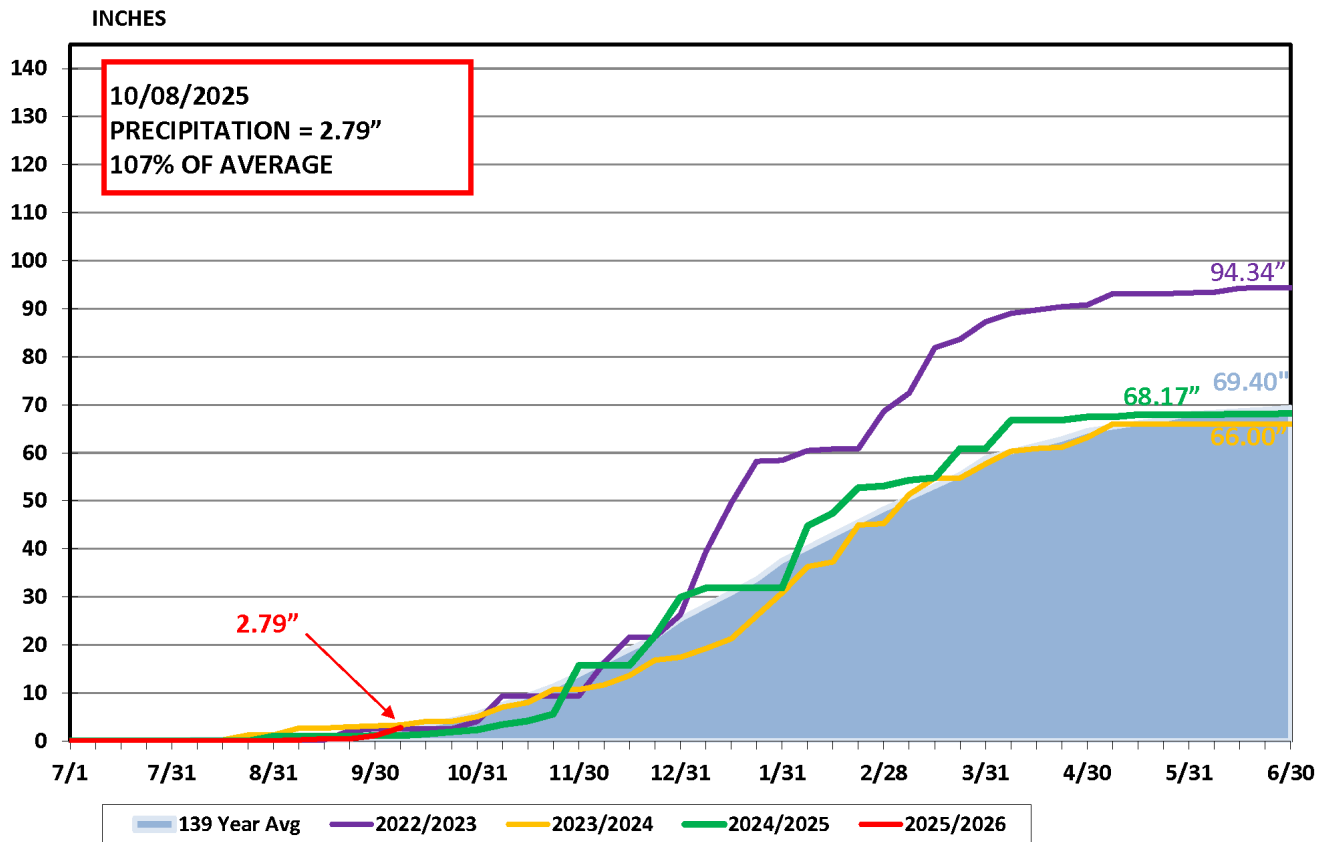
NID has been keeping weather records for Bowman Reservoir (elevation 5,650 ft.) since 1929.

The 69.2-inch annual average precipitation at Bowman compares to an annual average of 56 inches at 2,700 feet near Nevada City and 52 inches at 2,400 feet in Grass Valley.

Precipitation is measured for a 12-month period — called the rainfall year season — beginning July 1 and ending June 30. Bowman ended the previous season at 99 percent of average.



BOWMAN LAKE PRECIPITATION



NID's total reservoir storage is 107% of average

Total reservoir storage was 185,932 acre-feet as of Oct. 8, 2025. That is 69 percent of capacity and 107 percent of an 11-year average.

NID's water managers regularly post updates of reservoir levels. You can see how water levels fluctuate in easy-to-read charts.

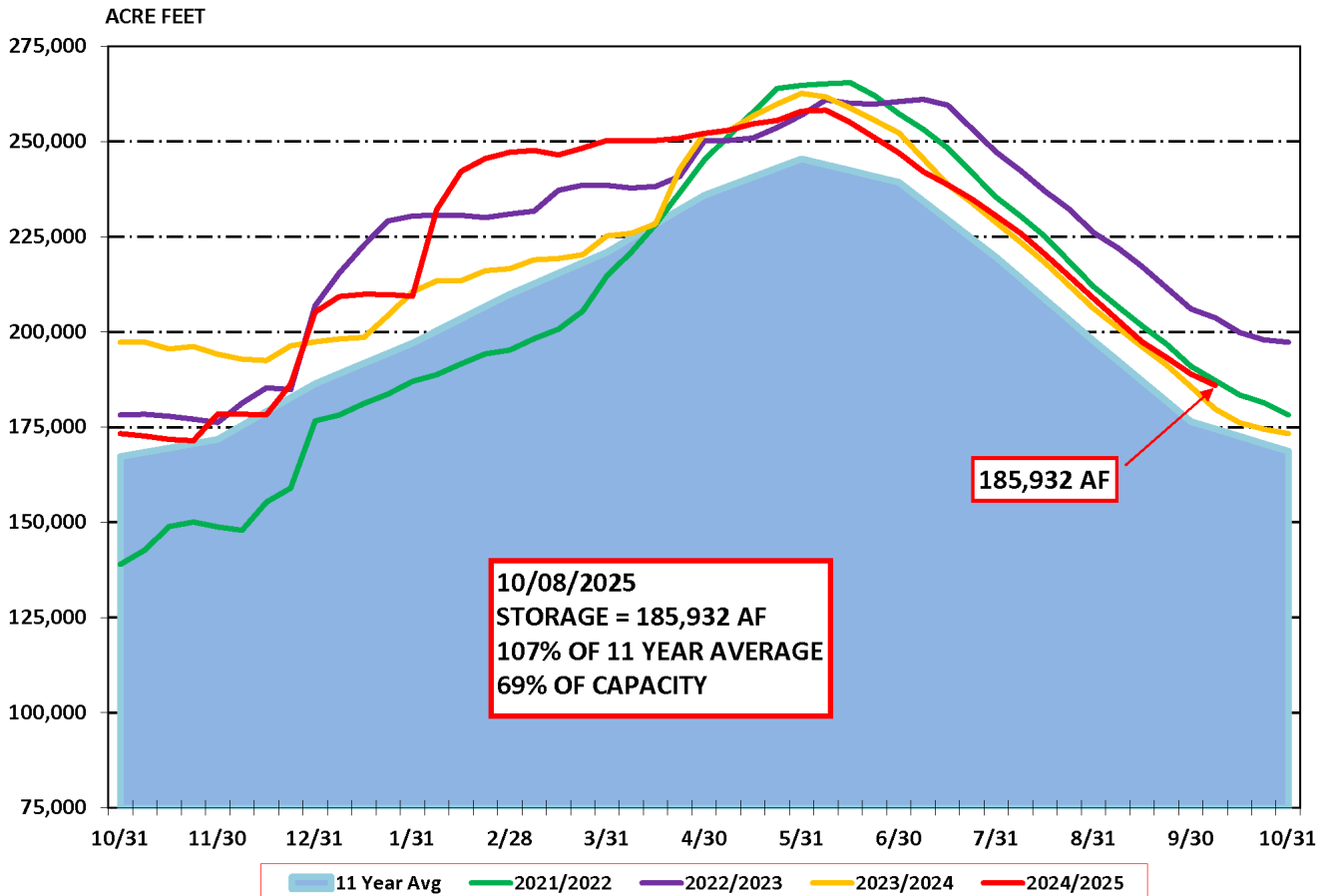
Reservoirs include: Jackson Meadows, Jackson, French, Faucherie, Sawmill, Bowman, and Canyon Creek, as well as Scotts Flat and Rollins.



Sawmill Lake

Interested in the latest information? It's all just a click way on the NID website under [River & Reservoir Data](#)

NID RESERVOIR STORAGE



Project Updates - Engineering, Hydropower and Operations

The NID Capital Improvement Program mid-year project status report has been released. Learn details about and check the latest status of projects in the 2025 CIP budget, including from the Engineering Department, Maintenance Department, Operations Department, Hydroelectric Department, Information Technology and Watershed Division.

[Engineering & Hydroelectric Project Status Updates](#)

Hughes Road Pipeline Replacement

Purpose: The original 20-inch steel pipe is more than 55 years old, has numerous leaks, and is at the end of its useful life. The pipe is a critical transmission main for providing downstream flows to the system, which will be replaced with approximately 1,240 feet of new pipe. The 600-foot section at the end of Litton Drive will be connected with a 10-inch pipe to provide a loop for flow.

Status: The Litton Drive section was completed and easements acquired. The Hughes Road pipeline is under construction and will be completed in September.

China Pipe Crossing at Riffle Box Ravine



Purpose: The 36-inch diameter steel pipe crossing over the Riffle Box Ravine transporting raw water for the China Union Canal has deteriorated. The pipe will be replaced with a new steel pipe and walkway. The new pipe will be connected with flanged-end sections. An existing access bridge has been inspected and may be included in future improvements to gain access to the pipe. The canal provides water supply to the Smartsville Water Treatment Plant and many in-home irrigation water users.

Status: The pipe has been purchased and scheduled for delivery to the site. The replacement of the existing pipe is scheduled for fall 2025.



Meetings & Events



Board of Directors Meeting
Wednesday, November 12, 2025
NID Main Office, Grass Valley

Board of Directors Meeting
Wednesday, December 10, 2025
NID Main Office, Grass Valley

*** Dates and times subject to change.
Please check nidwater.com for updates*

Thank You

VETERANS

Honoring all who served

