



GM Newsletter

January 2025

From The Desk of Jennifer Hanson, General Manager

Water For Life

BOARD OF DIRECTORS



Ricki Heck
Division I
President



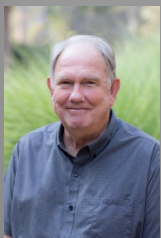
Chris Bierwagen
Division II
Vice President



Brad Fowler
Division III



Earl Stephens
Division IV



Rich Johansen
Division V

Message from the General Manager

Now that we are early into 2025, I want to wish you all a year filled with happiness and success. At NID, we vow to continue our first-rate service to ensure you receive reliable, high-quality water.

Behind the scenes and in your neighborhood, we are working hard to make this possible. For example, NID just received an award for its financial efficiency that is the fruition of a dedicated, skilled finance department. Also, improvements to the Maben Canal will make a difference for customers living along Lime Kiln.

This year, we look forward to keep serving you. Read about our work and accomplishments each month in the GM Newsletter. Thank you for your support and trust. It means much to us.

In this edition:

- * Boat launches at Rollins and Scotts Flat remain temporarily closed, [Page 2](#)
- * Clear Creek Elementary School students learn about water, [Page 2](#)
- * Water supply update - average for the year but dry weather has impacts, [Page 3](#)
- * Water conservation still required, [Page 3](#)
- * NID receives award for excellence in financial reporting, [Page 4](#)



NID is working to improve the Maben Canal along Lime Kiln. The current section of the canal is undersized and has not met downstream demands. This project includes the encasement of an existing canal and the enlargement of an old siphon. Read about the project, [Page 7](#).

Clear Creek School students learn about water



NID representatives hosted an assembly at Clear Creek Elementary School off McCourtney Road to talk to more than 200 students about where their water comes from, the distribution system, and water conservation.

The school recently put in a garden, and they wanted to educate their students about water and water conservation.

Different NID employees discussed specific topics. Besides talking about where our water comes from and the importance of watersheds, the students learned about the District's distribution system, leaks in the canals, how we fix them, and keeping the water flowing during winter months.

The students learned how not only they can conserve water in their home, but how they can save water in their school garden. This includes how to use drip irrigation, mulch in the garden, checking for leaks, and using an irrigation timer.

Most of the students have visited one of the District's reservoirs, so the speakers were able "to bring it full circle that the water they see at their home and school comes from the same place they camped or swam at last summer," says Kaycee Strong, NID Water Efficiency Technician.

Boat launches at Rollins, Scotts Flat remain temporarily closed

Prevention against highly destructive golden mussel

All boat launches at Rollins and Scotts Flat reservoirs remain closed to motorized watercraft as a precaution to prevent the spread of the highly invasive golden mussel.

The freshwater bivalves reproduce at an alarming rate, and pose a real risk to NID infrastructure if introduced into local waters.

The District is awaiting direction from state officials and hopes to reopen boat ramps at the reservoirs in late January or early February.

Meanwhile, NID is developing a plan to keep the mussels out of waterways. The plan will likely include an inspection program similar to the District's quagga and zebra mussels protocols. Read about the program, [click here](#).

On Oct. 17, 2024 the California Department of Water Resources reported finding mature golden mussels at the Port of Stockton. Immediately, state officials called the situation a "significant immediate threat." Once present, the mussels' infestation can quickly cause devastating damage. The greatest risk is the mussels will be transferred by boats from other waterways.

Other districts and cities are taking action, as well. For example, East Bay Municipal Utility District has temporarily closed boat launches on its Lake Camanche, and the City of Napa has closed the launch and banned boats on Lake Hennessey. Also, the Bureau of Reclamation and Solano County Water District have implemented a 30-day quarantine for all boats entering Lake Berryessa.



Golden mussels colonize a water pipe at a hydroelectric plant in Brazil in 2021.

Water Supply Update: average season but expect dry-weather impacts

The unseasonably dry weather has had an impact, yet overall precipitation and NID reservoir levels are slightly above average for the water year. The precipitation at Bowman Lake was 94 percent of average as of Jan. 22, 2025. And NID's total reservoir storage is 108 percent of an 11-year average as of Jan. 22, 2025. Notably, the snowpack is suffering with the dry start to the year (around 74 percent of average).

See [Page 5](#) (Bowman) and [Page 6](#) (Total Reservoirs) for water charts.

Scotts Flat Reservoir still lags behind average for this time of year, but it is filling gradually through natural precipitation and NID's water managing practices to keep flows through the South Yuba Canal. The reservoir is at 81 percent capacity, compared to 92 percent last year at the same time.



Scotts Flat Reservoir was at 80 percent capacity on Jan. 6

Repairs to Pacific Gas and Electric Company's (PG&E) Spaulding 2 hydroelectric powerhouse at Lake Spaulding remain on schedule, with testing scheduled through early February. Once the powerhouse is repaired, PG&E intends to take Spaulding 1 powerhouse offline for further repairs. That work is scheduled to be completed in July, barring any unforeseen issues or extreme weather. This will likely impact NID water conveyance to District customers.

NID water managers anticipate Scotts Flat Reservoir will be in better condition than last year during the summer and fall, while Rollins Reservoir will likely fall to depleted levels again this year.

Water conservation is still required

NID customers still need to conserve under the emergency declaration made last summer during the severe water shortage.

The mandate will continue into 2025 until PG&E completes repairs to its damaged infrastructure at Lake Spaulding. NID's declaration requires all customers to reduce their water usage by at least 20 percent until water is again flowing reliably from Lake Spaulding through NID canals to Rollins and Scotts Flat lakes. Those repairs will continue in 2025.

Customers initially complied with the mandatory water conservation, but heatwaves during the summer, including record-breaking temperatures in July, drove up water use. For all of 2024, treated water customers used 4 percent more water than during 2023. On a more positive note, this month customers have used 2 percent less treated water than a previous 12-year average.

[Wintertime conservation tips, click here](#)



NID receives award for excellence in financial reporting

The Nevada Irrigation District (NID) has received the Certificate of Achievement for Excellence in Financial Reporting for its Annual Comprehensive Financial Report (ACFR).

The Government Finance Officers Association of the United States and Canada (GFOA) granted the award for the report, which is independently audited, covering the fiscal year that ended December 31, 2023.

The certificate is the highest form of recognition in the area of governmental accounting and financial reporting, and its attainment represents a significant accomplishment by a government and its management.

“The ACFR award is like a gold star for the Finance Department and how well NID handles its financial activities, including following policies and procedures and management of reporting out to the public in order to have a clean independent annual audit,” said NID Controller Katherine Korsak. “It shows that NID has high standards for maintaining accurate records and making them easier for all to understand.”

The GFOA, which is based in Chicago, noted in a release to NID: “The report has been judged by an impartial panel to meet the high standards of the program, which includes demonstrating a constructive ‘spirit of full disclosure’ to clearly communicate its financial story and motivate potential users and user groups to read the report.”



NID Finance Team



Rollins Lake

Orchard Springs Campground: Phone (530) 346-0073 (gatehouse located at 19085 Larsen Road, Grass Valley). Hours: 7:30 a.m. to 4:00 p.m. Monday-Friday. [Orchard Springs webpage](#).

Long Ravine Campground: (530) 346-6166 (gatehouse located at 26909 Rollins Lake Road, Colfax). Hours: 7:30 a.m. to 4:00 p.m. Monday-Friday. [Long Ravine webpage](#).

Peninsula Campground: Phone (530) 477-9413 or online on our [Peninsula webpage](#)

Scotts Flat Lake

Scotts Flat Campground: Phone (530) 265-5302. Campground address: 23333 Scotts Flat Road, Nevada City, CA 95959. Hours Monday-Friday: 7:30 a.m. to 4:00 p.m. Reservations can also be made [online](#)

High Sierra Jackson Meadows and Faucherie Lakes

Faucherie, Aspen, and Silvertip: Phone (530) 265-5302 or in person at our Scotts Flat Office located at 23333 Scotts Flat Road, Nevada City, CA 95959. Hours: 7:30 a.m. to 4p.m.

Bowman Lake



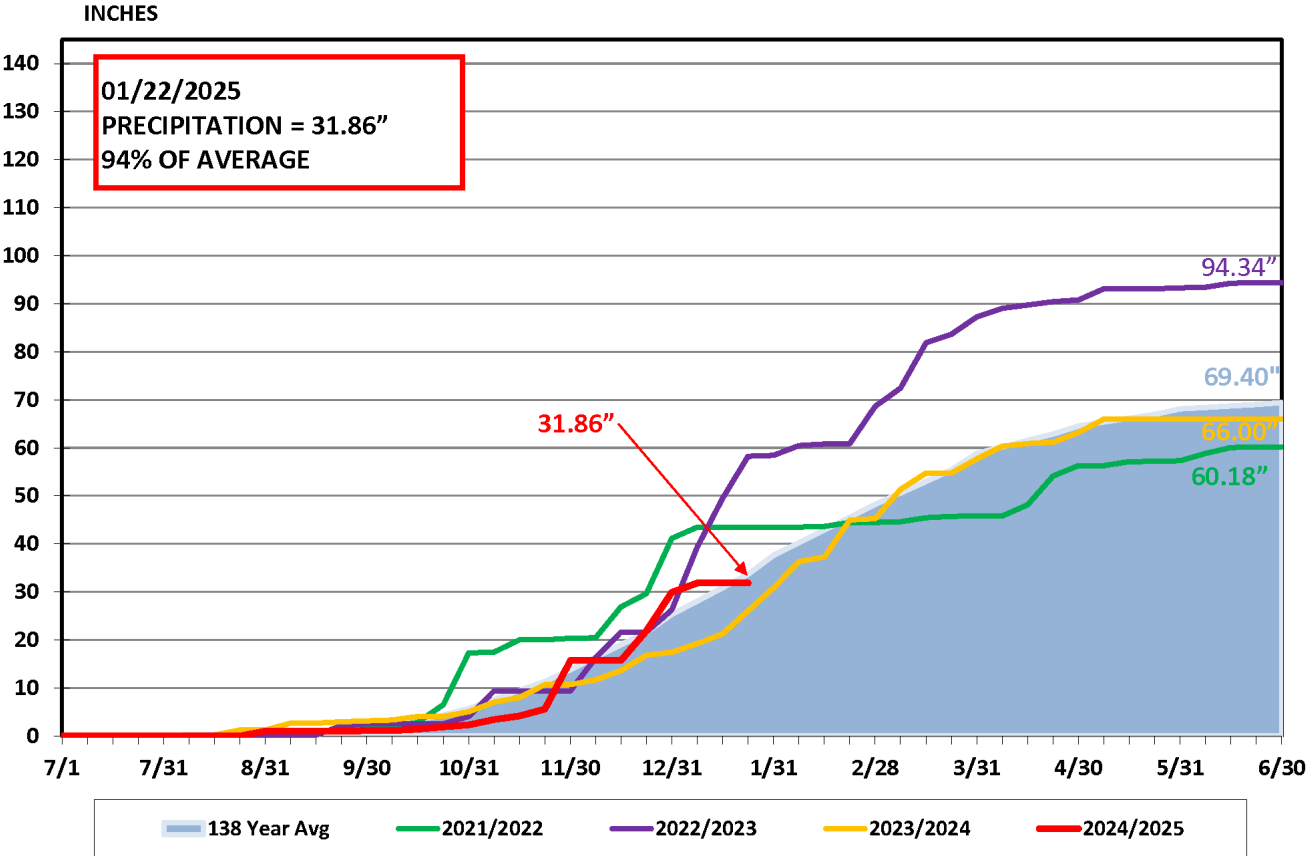
NID has been keeping weather records for Bowman Reservoir (elevation 5,650 ft.) since 1929.

The 69.2-inch annual average precipitation at Bowman compares to an annual average of 56 inches at 2,700 feet near Nevada City and 52 inches at 2,400 feet in Grass Valley.

Precipitation is measured for the 12-month period beginning July 1 and ending June 30.

As of Jan. 22, 2025, 31.86 inches of precipitation had fallen at Bowman. That is 94 percent of average.

BOWMAN LAKE PRECIPITATION



NID's total reservoir storage is 108% above average

Total reservoir storage was 209,786 acre-feet as of January 22, 2025. That is 108 percent of an 11-year average.

NID's water managers regularly post updates of reservoir levels. You can see how water levels fluctuate in easy-to-read charts.

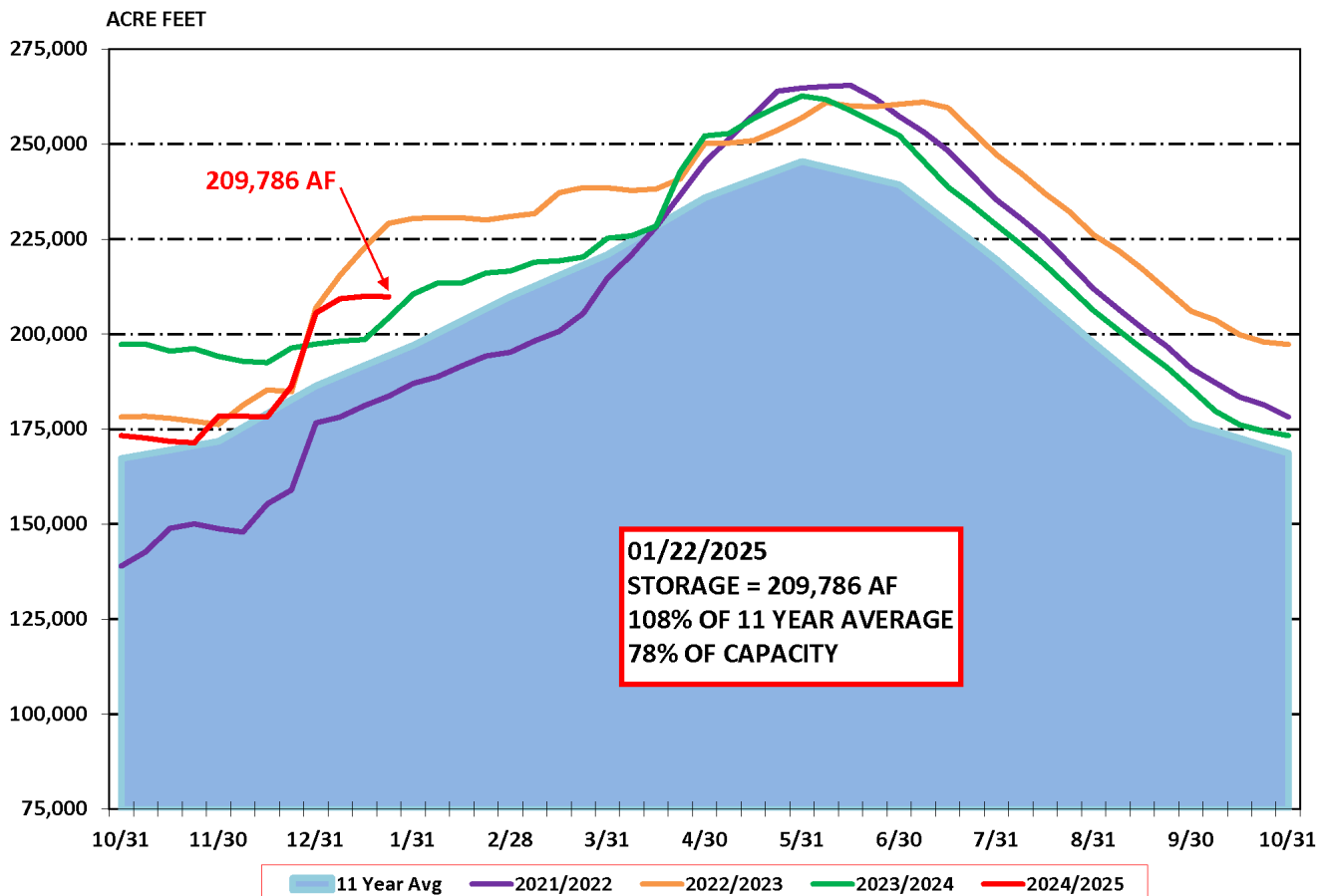
Lakes include: Jackson Meadows, Jackson, French, Faucherie, Sawmill, Bowman, and Canyon Creek, as well as Scotts Flat and Rollins.

Interested in the latest information? It's all just a click way on the NID website under [River & Reservoir Data](#).



Faucherie Reservoir in March 2023

NID RESERVOIR STORAGE



Project Updates - Engineering, Hydropower and Operations

The NID Engineering Department has a number of projects in various phases of construction.

Project Status Reports provide project information, planner information, and a brief project description. Be sure to sign up for email news alerts about projects.

[2025 Engineering & Hydroelectric Project Status Updates](#)

Project: Maben Canal Phase IV Improvement Project nears completion

The Maben Canal Phase IV Improvement Project includes the encasement of open portions of an existing canal and the enlargement of an existing siphon.

The canal is located on the backside of private properties with difficult access for maintenance. The current section of the canal is undersized and does not meet downstream demands.

Roughly 600 feet of open canal will be converted into an 18-inch diameter, buried pipe and a 470-foot long, 12-inch diameter siphon (pipe) will be replaced with a 24-inch PVC pipe to realize the required flow capacity. A control valve and flow-measuring flume will be added at the end of the project to provide control and measurement of flow.

The project will provide uninterrupted service and lift the moratorium to allow water service for new customers. The canal lies near the southern borders of Nevada County, along Lime Kiln.

(Left) An NID construction inspector points to a nearly 40-year old siphon that is being replaced

(Below left) A canal will be encased in 18-inch pipe

(Below right) A canal flows along the back of properties



Meetings & Events



Board of Directors Meeting
Wednesday, February 12, 2025
NID Main Office, Grass Valley

Board of Directors Meeting
Wednesday, February 26, 2025
NID Main Office, Grass Valley

Board of Directors Meeting
Wednesday, March 12, 2025
NID Main Office, Grass Valley

*** Dates and times subject to change.
Please check nidwater.com for up-
dates*

