



GM Newsletter

April 2024

From The Desk of Jennifer Hanson, General Manager

Water For Life

BOARD OF DIRECTORS



Rich Johansen
Division V
President



Ricki Heck
Division I
Vice President



Chris Bierwagen
Division II



Karen Hull
Division III



Trevor Caulder
Division IV

Message from the General Manager

Irrigation season began on April 15, meaning NID's canals are filling for deliveries of raw water to customers. That water is drawn from foothill reservoirs; Scotts Flat Reservoir supplies Nevada County, and Rollins Reservoir supplies Placer County.

However, this year the season is against the backdrop of limited water supply and a call for conservation. Despite a wet winter season that has delivered an average amount of precipitation, a landslide and infrastructure failure owned by Pacific Gas and Electric (PG&E) at Lake Spaulding has cut off water supply to NID conveyance systems.

What can you do? NID requests all customers to immediately start conserving the water they use. Stay up to date on the situation; NID has created a webpage that will have constant updates about the availability of water supply. Full story on [Page 2](#).

In this edition:

- * Water shortage emergency declared; NID has created a webpage with updates and downloadable information, [Page 2](#)
- * What is grown with NID irrigation water? See the Top Crops 2024 list, [Page 3](#)
- * Mulch Magic Giveaway is April 27, [Page 4](#)



An NID worker stands atop the South Yuba Canal during a recent planned outage for maintenance. [Take a front-row seat to the work. Click here to watch a short video \(2:52 minutes\) with incredible views and a clear perspective of what it takes to maintain the canal.](#)

Damaged PG&E infrastructure impacts NID water supply

NID creates webpage with updated info about water situation

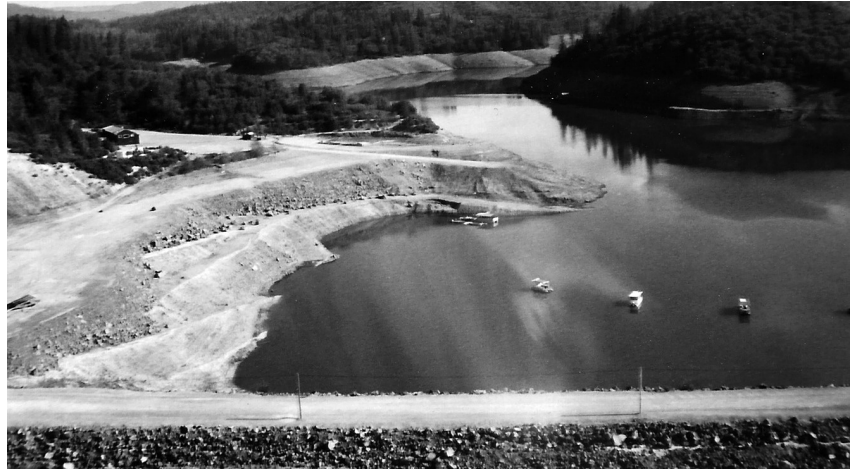
Severe damage to infrastructure owned by Pacific Gas & Electric (PG&E) at Lake Spaulding has effectively cut off water supplies to NID. NID has created a website with frequent updates and downloadable information about the situation.

Limited water supply will impact deliveries to all NID customers (raw water and treated water customers in Nevada and Placer counties) and have severe effects on lake levels and recreation opportunities this summer. Also, hydroelectric generation will be affected by the water restrictions.

The start of irrigation season on April 15 means flows are being tapped from Scotts Flat and Rollins reservoirs, even though no water is available to refresh the supplies.

It is imperative that PG&E provides at least partial flows by June 12. Otherwise, NID is at significant risk of running out of water for both treated water and agricultural uses. Facing a significant water shortage will cause hundreds of millions of dollars' worth of damage to the communities NID serves.

The District is currently requesting voluntary 20 percent conservation by all customers. The lack of access to normal watershed runoff means the District will need to rely upon limited water storage to begin the irrigation season, starting on April 15. Conserving water will allow supplies to remain in Rollins and Scotts Flat reservoirs.



Water levels plummeted at Rollins Reservoir during the drought of 1976. Rollins is expected to take the brunt of the impacts this summer.

[What's the latest? Click here to access the webpage: Damaged PG&E infrastructure impacts NID water supply](#)

Frequently Asked Questions: must-read responses

Available on a [webpage](#) and as a [PDF download](#)

- What is the issue?
- Background - what has happened
- What flows are cut off?
- Impacts to NID?
- What will happen at Rollins Reservoir?
- What will happen at Scotts Flat Reservoir?
- What's the timeframe for the PG&E repairs?
- NID is calling for conservation?

What are NID customers growing?



Raw water is used for diverse agricultural endeavors, ranging from irrigating pastures and family gardens to growing crops.

Nevada Irrigation District was formed in 1921 to provide water to ranches, fields and orchards in Nevada and Placer counties. The District encompasses 287,000 acres, and stretches from the headwaters of the Yuba River, Bear River and Deer Creek down to the Sierra foothills.



Within the service area, diverse crops flourish due to the differences in topographical, geological, climatic, and soil conditions. NID provides irrigation for more than 32,700 acres, with 12,421 miner's inches of water sold in 2023.



The largest crops by acreage are irrigated pasture and family gardens/orchards. Many of the District's raw water customers have 10 acres or less of irrigated land.

Top Crops

Irrigated pasture- 20,234 acres ... 7,312 miner's inches

Family gardens/orchards- 6,410 acres ... 3,260 miner's inches

Golf courses- 985 acres ... 645 miner's inches

Hay- 837 acres ... 451 miner's inches

"Other"- 752 acres ... 92 miner's inches

Grapes (non-table)- 695 acres ... 168 miner's inches

Nursery- 349 acres ... 210 miner's inches

Apples- 289 acres ... 121 miner's inches

Forage (other)- 230 acres ... 60 miner's inches

Parks- 226 acres ... 48 miner's inches

Nuts- 208 acres ... 38 miner's inches

Citrus- 201 acres ... 65 miner's inches

Fruits (other)- 199 acres ... 69 miner's inches

Plums- 156 acres ... 54 miner's inches

Alfalfa hay- 156 acres ... 42 miner's inches

Peaches- 120 acres ... 45 miner's inches

Pears- 120 acres ... 38 miner's inches

Berries- 118 acres ... 38 miner's inches

NID's Crop Report

Every year, NID surveys its agriculture customers to inventory the type and approximate acreage of cultivated crops. This information is used in the District's annual Crop Report data.

The Top Crop list presented here is from the 2023 crop report.



NID's Annual Mulch Magic Giveaway is April 27

Free mulch available for pick-up

The Nevada Irrigation District (NID) will provide free mulch available to local residents for pick up on a first-come, first-served basis on April 27 at the Nevada County Fairgrounds.

"Mulch Magic is part of the District's continuing efforts to promote conscientious water use and conservation," said NID's Water Efficiency Technician Kaycee Strong.

Mulch is a great tool to help save water in gardening and landscaping. Two or three inches of mulch helps retain water, keeping the soil moist for longer periods of time.

Last year, 80 residents took away about 250 cubic yards of free mulch.

"Get there early on April 27. The mulch will go fast!" Strong said.



Date: Saturday April 27, 2023 from 7am-11am (or until supplies are gone)

Location: Nevada County Fairgrounds- Enter Gate 8 off Brighton Street (event will be held in the arena)

Self-load: Bring your own shovels, container, truck, and tarp to cover your load.

Need Help Loading? Local Boy and Eagle Scouts will be available to help load mulch into your vehicle. NID reminds you to "tip your scout."

Limitations:

- Limit 1 cubic yard per vehicle
- For personal use only; not for resale or commercial use.

This is the District's seventh annual Mulch Magic Giveaway.

Sponsor: Nevada County Fairgrounds.

Questions? Contact Kaycee Strong at 530-273-6185 extension 1244 or strongk@nidwater.com



South Yuba Canal

Maintaining the Legacy of NID Water

Precariously perched on the side of a mountain and blasted through granite tunnels, NID's South Yuba Canal conveys precious snowmelt runoff from the upper reaches of the Sierra crest to the communities of Nevada County. Part wooden flume, part canal and tunnels, this vital infrastructure dates back to the California Gold Rush era.

Today, its flows ensure Nevada County has irrigation water for local farms and fields, has treated water for household taps, keeps Scotts Flat Reservoir open for recreation, provides flows to generate hydroelectricity, and supplies our local Grass Valley Air Attack Base with water resources necessary in fighting wildfires from the air. The canal is also the primary conveyance to supply water to the cities of Grass Valley and Nevada City.

In total, it is part of the Deer Creek system that provides irrigation water to more than 3,300 customers and drinking water to another 18,260 customers.



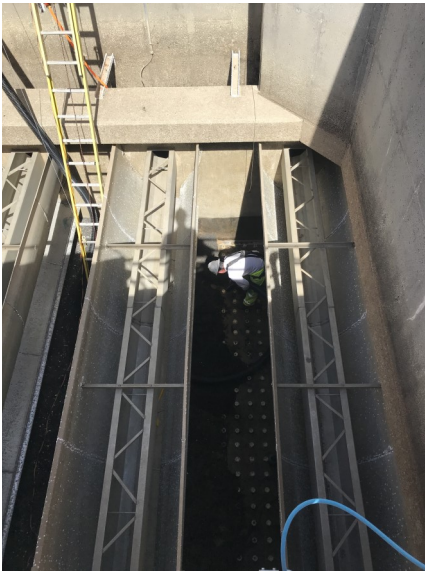
The District purchased a 17-mile stretch of flume and tunnel from Pacific Gas & Electric (PG&E) in 2023. This is NID's primary water conveyance to customers of western Nevada County. The infrastructure moves water from the mountain headwaters of the Middle and South Yuba Rivers – from the Jackson Meadows, Bowman and Spaulding area – to Scotts Flat Reservoir.

“The South Yuba Canal is the lifeblood of Nevada County,” said NID General Manager Jennifer Hanson. “It is the district's critical water delivery system from the source headwaters high in the Sierra Nevada.”

Recently, NID crews spent two weeks to repair and reinforce portions of the canal. A helicopter flew in and dropped beams and girders to workers positioned on a narrow walkway atop the flume and canal. It was dangerous, necessary work to shore up the infrastructure.

Can't miss this! [Take a front-row seat to the work. Click here to watch a short video \(2:52 minutes\) with incredible views and a clear perspective of what it takes to maintain the canal.](#)

Water quality remains top priority at E. George Water Treatment Plant



Elizabeth George Treatment plant, NID's largest facility, has recently undergone an extensive cleaning of material in four separate filters.

The 800-plus nasals per filter -- 3,200-plus in all -- had to be removed, disassembled and cleaned before they could be re-installed.

This project is another example of NID's commitment to water quality. The District's water continues to exceed state and federal standards.

Read the latest [Water Quality Report](#). This year's report is expected to be released in late May or early June.



E. George Treatment Plant Fast Facts:

- 18 MGD capacity
- Serves 6,342 connections
- Equivalent to a population of 18,000 people
- 153 miles of pipeline
- Intertied with Loma Rica, and the cities of Nevada City and Grass Valley
- Produced 1,269 billion gallons in 2020

NID takes part in Nevada County Hazard Mitigation Plan Update

NID is proud to partner with Nevada County and other municipalities and special districts in the county's Local Hazard Mitigation Plan Update (LHMP), which is a multi-jurisdictional plan that addresses all hazards countywide, including wildfire.

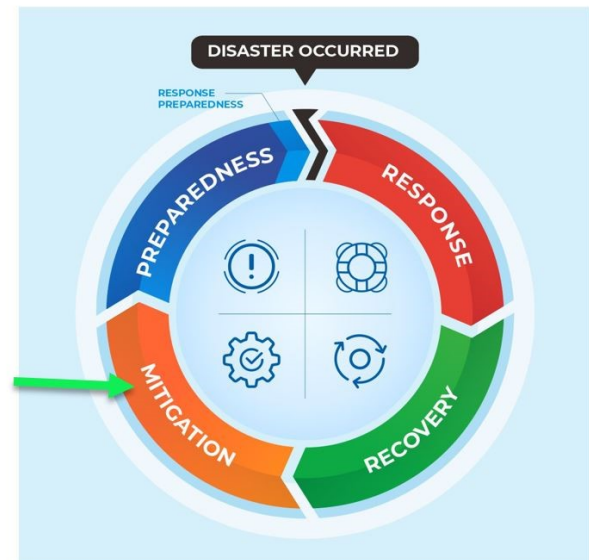
NID has created a webpage to detail aspects of the Plan. Read the District's "Natural Hazard Events History" summarizing damages and losses to NID property and infrastructure as a result of past natural hazard events. [Click here](#).

Get involved! Take the survey!

2024 Nevada County Hazard Mitigation Plan Survey

The community survey is designed to help Nevada County better prepare our communities to withstand the hazards and potential disasters that are most relevant to the area.

[Click here to take the survey](#)



"Sustained action taken to reduce or eliminate long-term risk to life and property"



Bowman Lake

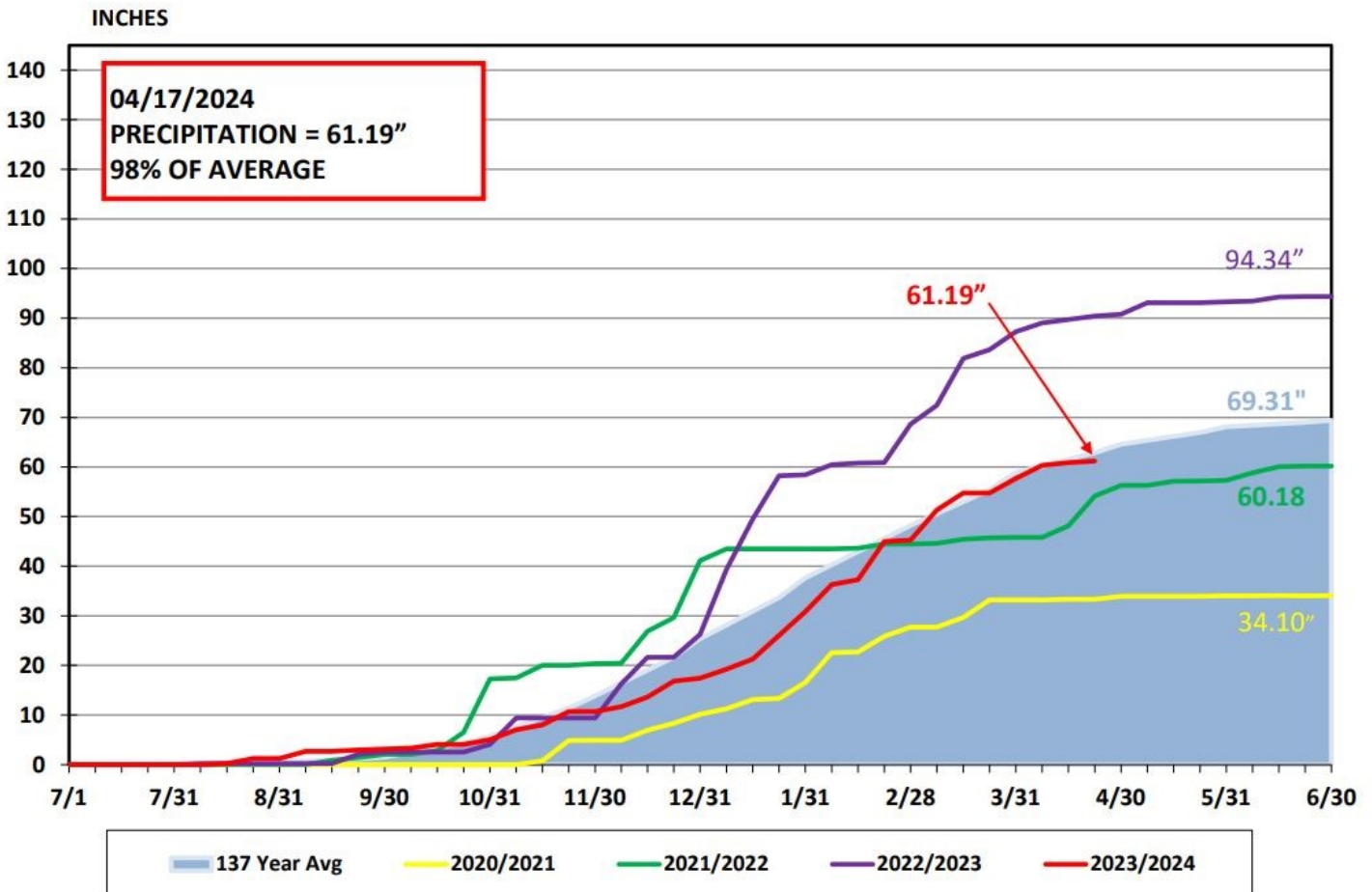
NID has been keeping weather records for Bowman Reservoir (elevation 5,650 ft.) since 1929.

The 69.2-inch annual average precipitation at Bowman compares to an annual average of 56 inches at 2,700 feet near Nevada City and 52 inches at 2,400 feet in Grass Valley.

Precipitation is measured for the 12-month period beginning July 1 and ending June 30.

As of April 17, 61.19 inches of precipitation had fallen at Bowman. That is 98 percent of average.

BOWMAN LAKE PRECIPITATION



Total reservoir storage is 87% of capacity

Reservoir storage is 235,716 acre-feet as of April 10. That is 87 percent of capacity and 103 percent of a 10-year average.

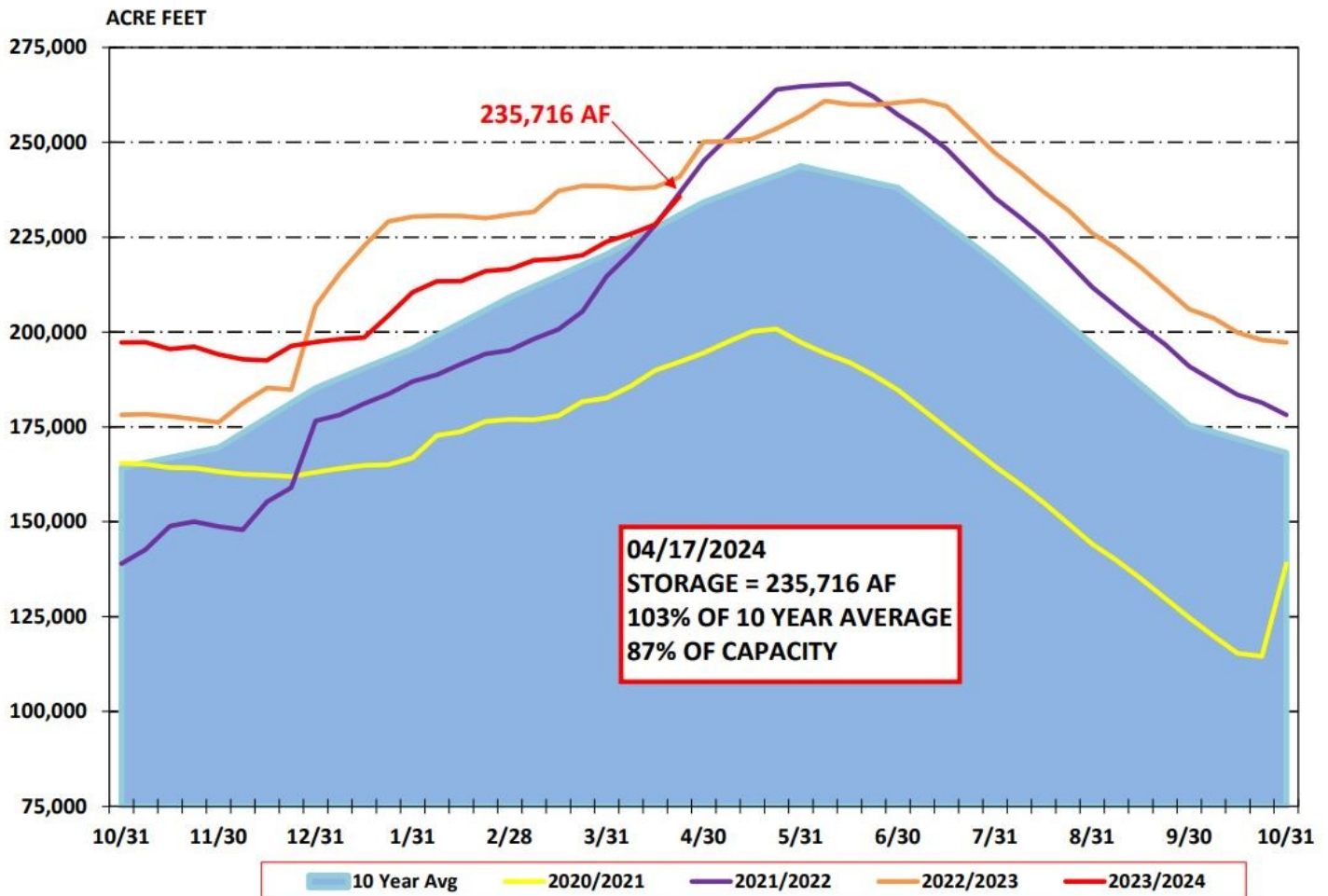
NID's water managers regularly post updates of local reservoir levels. You can see how water levels fluctuate in easy-to-read charts.

It's all just a click away on the NID website under [River & Reservoir Data](#).



Sawmill Lake

NID RESERVOIR STORAGE



NID monthly snow survey: 99% of average

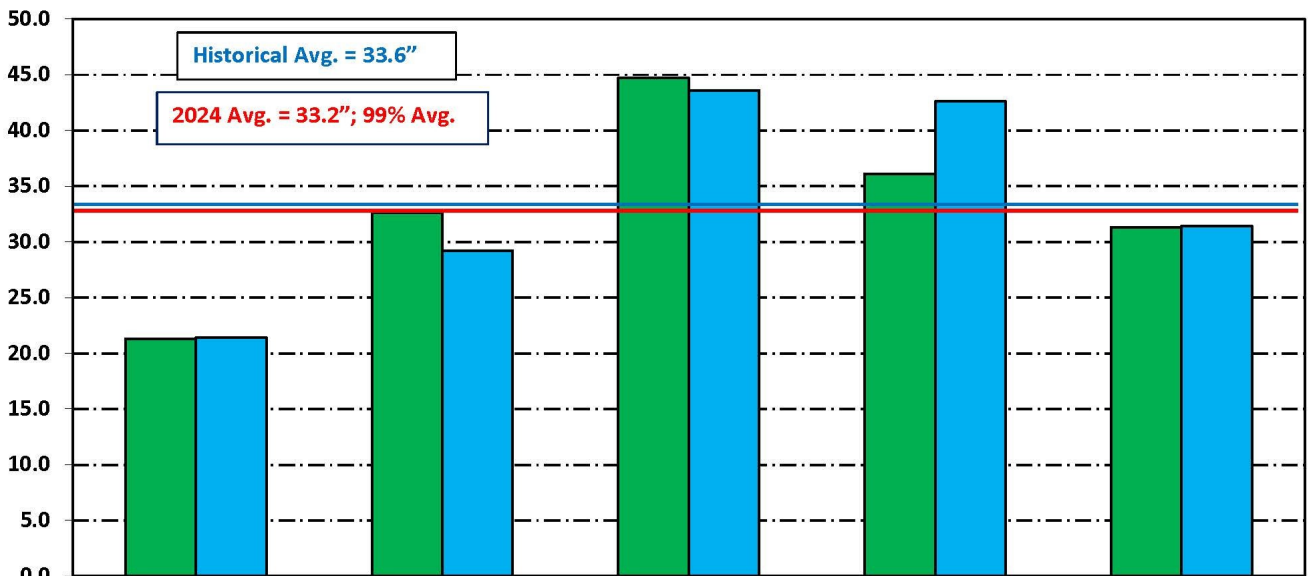
NID conducts its snow surveys on five snow courses of varying elevation that provide water to raw- and treated water customers.

Snow water equivalent is an indicator of how much water the snowpack contains. This helps water managers plan for water use.

NID is a member of the California Cooperative Snow Survey. Results of the District's snow surveys are used to predict water availability locally and statewide.

NID SNOW SURVEY April 1, 2024 WATER CONTENT

WATER CONTENT (IN.)



	BOWMAN LK.	FINDLEY PK.	ENGLISH MTN.	WEBBER PEAK	WEBBER LAKE
■ 2024	21.3	32.6	44.7	36.1	31.3
■ AVERAGE	21.4	29.2	43.6	42.6	31.4

Project Updates - Engineering, Hydropower and Operations

The NID Engineering Department has a number of projects in various phases of construction.

Updated Project Status Reports are now available on the [District's Projects webpage](#). These reports provide project information, planner information, and a brief project description. Be sure to sign up for email news alerts about projects.

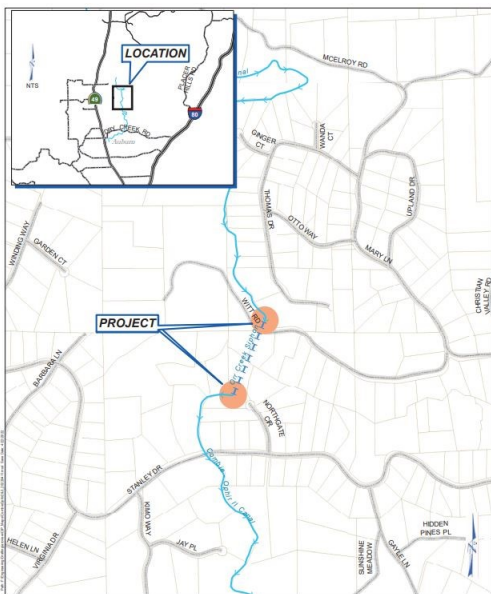
[Engineering Department Project Status Report March 31, 2024](#)



North Day Road Pipeline Replacement Project

This project is located north of Highway 174 on North Day Road, replacing the existing aged and deteriorating treated water pipe with approximately 3,820 feet of 8-inch pipeline, three fire hydrants, and 33 new service connections.

Although stormy weather forced a pause, crews will resume their work off Highway 174. About 1,100 feet of pipe remain to be installed. The project is projected to be completed in 2024. [Read more, click here.](#)



The Combie and Ophir 2 & 3 Siphon Replacement Project

The Combie and Ophir 2 & 3 Siphon Replacement Project involves the replacement of three existing underground siphon pipelines.

The Orr Creek, Dry Creek, and Rock Creek siphons are each more than 50 years old, are nearing the end of their useful life, and require resizing to address approved future flow needs. The siphons are part of NID's Combie and Ophir 2 & 3 raw water delivery system.

The first replacement will be the Orr Creek Siphon, which is currently under design and will be replaced in the fall of this year. [Read more, click here.](#)

COMBIE OPHIR 2 & 3

Meetings & Events

Board of Directors Meeting
Wednesday, April 24, 2024
NID Main Office, Grass Valley

Board of Directors Meeting
Wednesday, May 8, 2024
NID Main Office, Grass Valley

Board of Directors Meeting
Wednesday, May 22, 2024
NID Main Office, Grass Valley



NID

*** Dates and times subject to change. Please check nidwater.com for updates*



Bowman Lake