



GM Newsletter

June 2023

From The Desk of Jennifer Hanson, General Manager

Water For Life

IN THIS EDITION

\$1.27 million grant to reduce fire fuel around Jackson Meadows (page 2)

Hydropower outage at Bowman (p. 4)

... much more

BOARD OF DIRECTORS



Karen Hull
President
Division III



Rich Johansen
Vice President
Division V



Ricki Heck
Division I



Chris Bierwagen
Division II



Trevor Caulder
Division IV

Message from the General Manager

We are having quite the summer. The extraordinary winter snowmelt has filled NID lakes, which are now brimming at 96 percent of capacity. Under a warming sun and tree-lined shores, the cool water is inviting.

As a result, this year we are seeing more visitors coming to enjoy the water, especially at Scotts Flat Lake.

What makes NID lakes even more attractive as a destination is the continued dangerous conditions of local waterways. The rivers are still raging, and that won't change anytime soon as snow continues to melt and rush downstream.

This presents challenges for NID. First is the increased number of day-use visitors. Second, because the lakes are at capacity, the water has diminished the size of beaches and recreation areas. More people and less space.

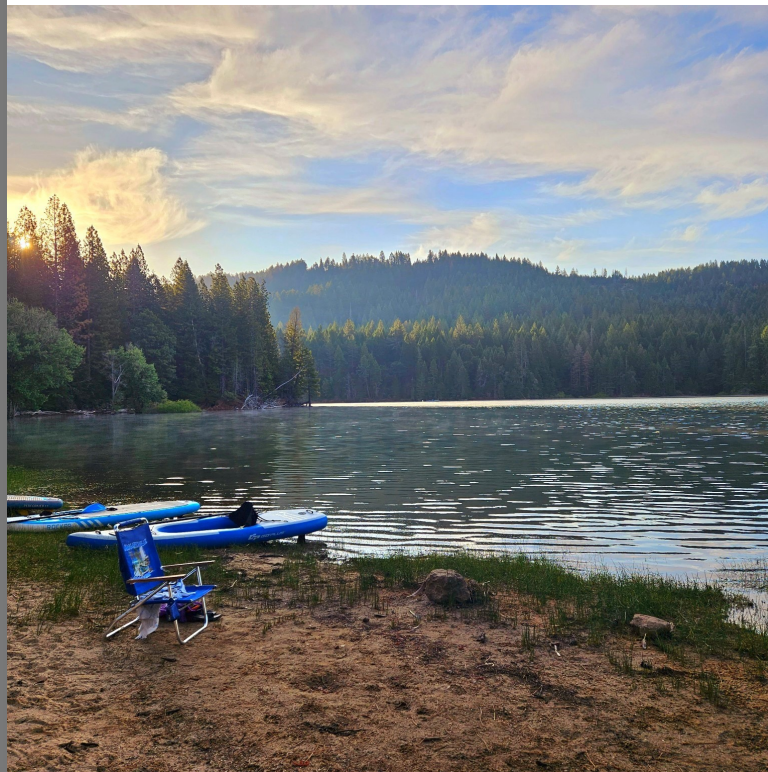
We welcome visitors to enjoy Scotts Flat, and have some tips to make sure your day is filled with nothing but positive memories. Foremost, plan ahead and get there early. The day-use area fills up fast, and once at capacity, we cannot allow additional entrance.

NID is placing signs along Scotts Flat Road to notify drivers when the day-use area is at capacity. This will save time and effort for visitors. [See Page 3 for more information.](#)

On a side note, in the mountains our crews are just now able to access some of the smaller Sierra lakes around Jackson Meadows, like Faucherie. The anticipated opening for public recreation and camping is July 7, although that date may change.

For updates and news, [check out our recreation webpage.](#)

See you at NID's beautiful lake facilities. Please join us in welcoming the summer!



Scotts Flat Lake
at sunrise

NID secures grant to fund fire fuel project near Jackson Meadows

Sierra Nevada Conservancy awards \$1.274 million

NID has received \$1,274,000 in funding from the Sierra Nevada Conservancy (SNC) to reduce fire fuels and improve forest health near Jackson Meadows Reservoir.

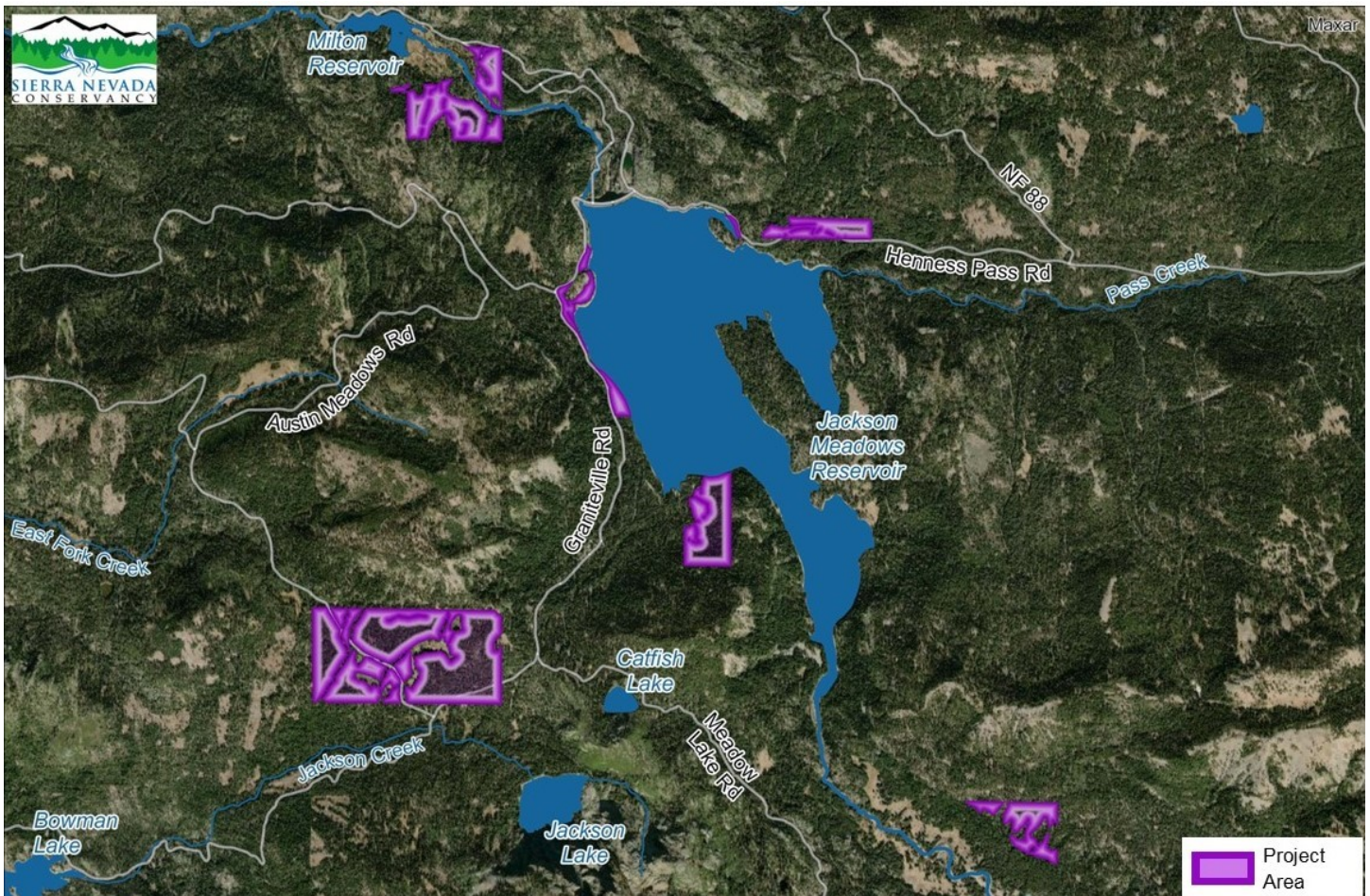
The grant will go to implement the Upper Yuba Headwaters Forest Restoration Project, which will remove understory fire fuels, hazard trees, and overly dense small trees on about 400 acres of District property. This will reduce the risk of catastrophic wildfire by improving forest resilience and watershed health.

Jackson Meadows is a critical headwaters area. This grant will provide important assistance so that NID can continue its work to protect our region's source watersheds. Healthy watersheds are vital; they supply water reliability for our community and our ecosystems.

The total cost of the Project is \$1.815 million. NID will contribute \$541,000 in addition to the SNC grant funding.

"We are so grateful to the Sierra Nevada Conservancy for this funding. It goes a long way to improve forest health and remove risks to human health and safety throughout the District," said Neysa King, NID's Environmental Resources Administrator.

[Read more about the grant funding and see photos, click here.](#)



Scotts Flat day-use recreation: plan to arrive early

As summer heats up, so is the demand for lake recreation. NID is pleased to welcome visitors to Scotts Flat Lake; however, the District advises that its day-use area fills quickly. Arrive early in the day to avoid being turned away at the gate.

This year more visitors frequent Scotts Flat for day use because dangerous cold, fast currents are deterrents for recreating on local rivers. The lake is an attractive destination, especially with its full capacity; there is plenty of water to enjoy. Yet, that also means the sandy beaches are underwater. The day-use recreation area has considerably shrunk in size compared to previous summers.

Entrance to the Scotts Flat day-use area is through the Campground Gate 2 on Scotts Flat Road, Nevada City. From Highway 20, it's a five-mile drive to the entrance gate. Throughout the summer, NID will place signs, starting at the top of Scotts Flat Road, notifying drivers when the day-use area is at capacity.

The Scotts Flat day-use area fills up most quickly on weekends and holidays. Fewer people access the beach on Monday through Wednesday.

Scotts Flat Day Use:

- Hours: dawn to dusk
- Vehicle (up to four people): \$17
- Walk-in or bike: \$3
- Each pet: \$6
- Day Use with Kayak/Canoe (2): \$20
- Motorcycle: \$10

* Reminder: Carpool to get the most from your day-use entrance fee -- \$17 per vehicle includes up to four people.

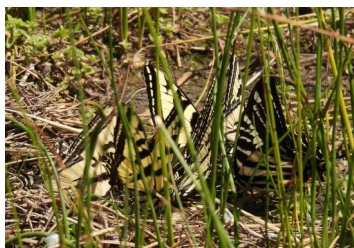
For more information about NID recreation facilities, check nidwater.com.



Osprey



Merganser



Kaleidoscope of Tiger Swallowtails



California Sister

Mountain recreation facilities scheduled to open July 7

NID's upper division facilities around Jackson Meadows remain closed due to snow-related conditions.

The anticipated opening is July 7, although that date may change, based on progress to gain safe access to lakes and campgrounds.

NID maintains and operates campgrounds and recreational facilities in the Jackson Meadows – Bowman lake areas. Jackson Meadows features several campgrounds, picnic day-use sites and boat ramps. Other campgrounds are located at Bowman, Sawmill and Faucherie Lakes.

For the latest information, see the [NID website](#) or the [U.S. Forest Service website](#).



Water rages below Bowman Dam on June 14.

NEW

NID Infrastructure Library

Learn about individual NID dams, reservoirs, canals and conduits in photos, descriptions and maps.

INFRASTRUCTURE LIBRARY

(Left) Texas Creek diversion dam displays its white-water beauty on June 14. (Below) Different types of infrastructure are present at the site.

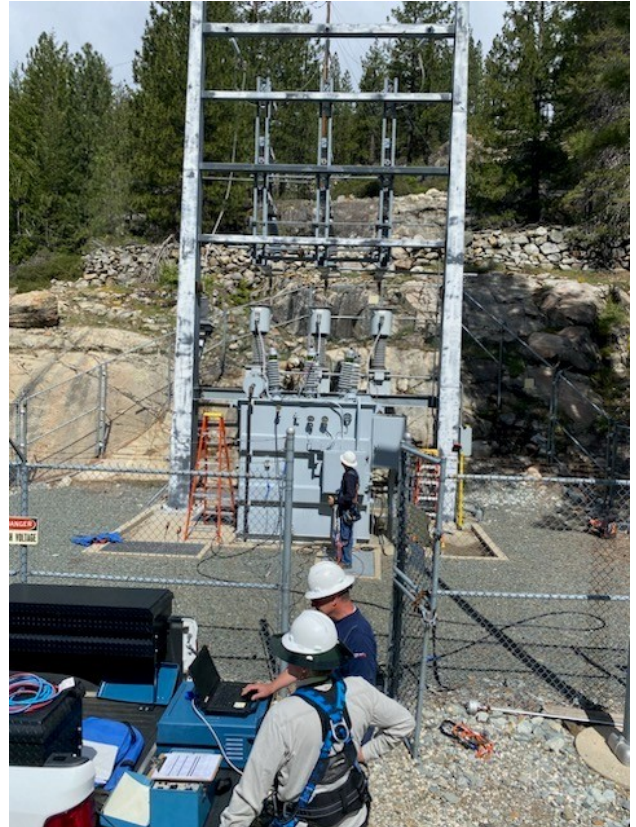


Hydro powerhouse outage completed at Bowman

In June, Hydroelectric Department Maintenance crews completed the annual outage on the Bowman-Spaulding Canal and the Bowman Powerhouse.

Work included removal of accumulated debris from the heavy winter, repairs to the Bowman transmission line, and routine testing, cleaning and maintenance of powerhouse equipment.

“Our maintenance crews did an excellent job during the June outage,” said Keane Sommers, NID Director of Power Systems. “The extreme snow from the winter greatly complicated our work but NID crews were up to the challenge and completed their work on schedule.”



Storm damage control: boulder removed from key canal



Hydroelectric Maintenance Technicians overcame a challenge to remove a boulder from the Bowman-Spaulding Canal. The large rock fell during a winter storm.

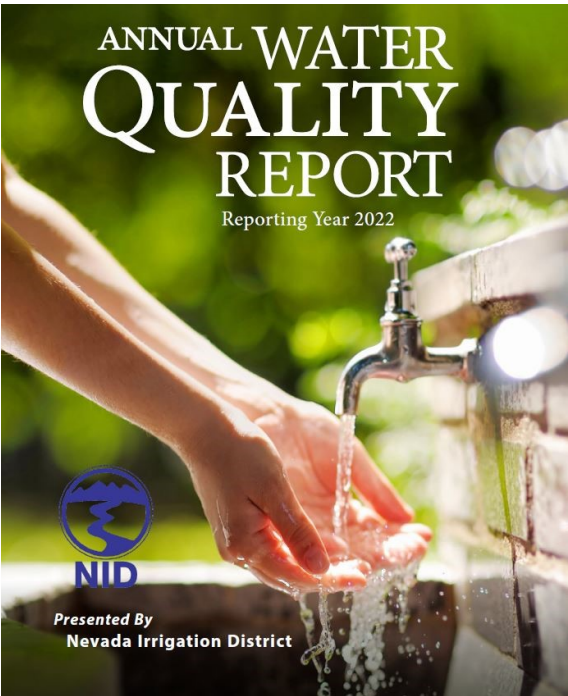
The NID team worked to carefully split and then remove the fragments from the canal.

NID drinking water continues to meet federal and state standards

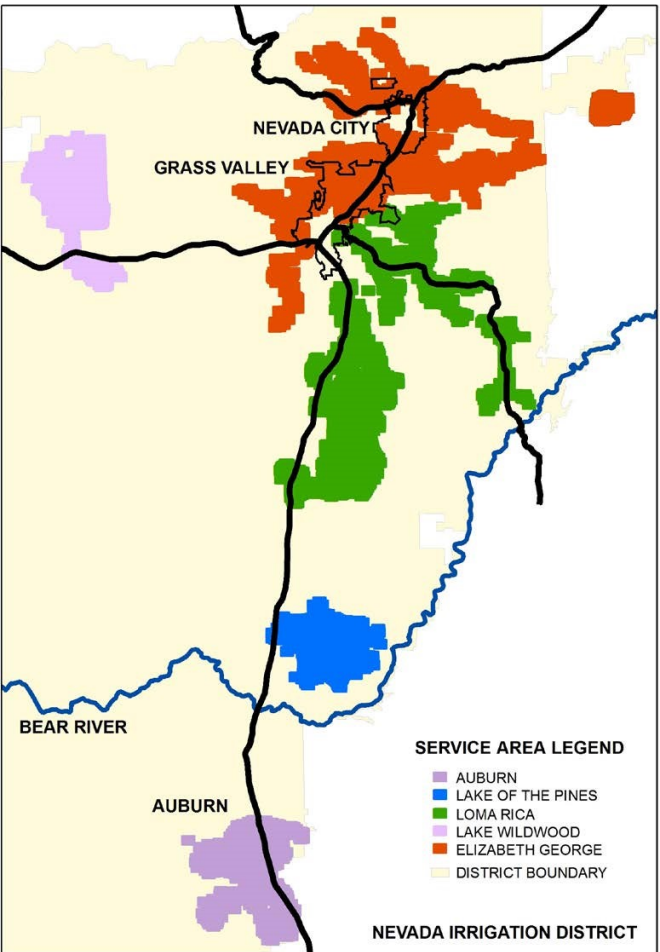
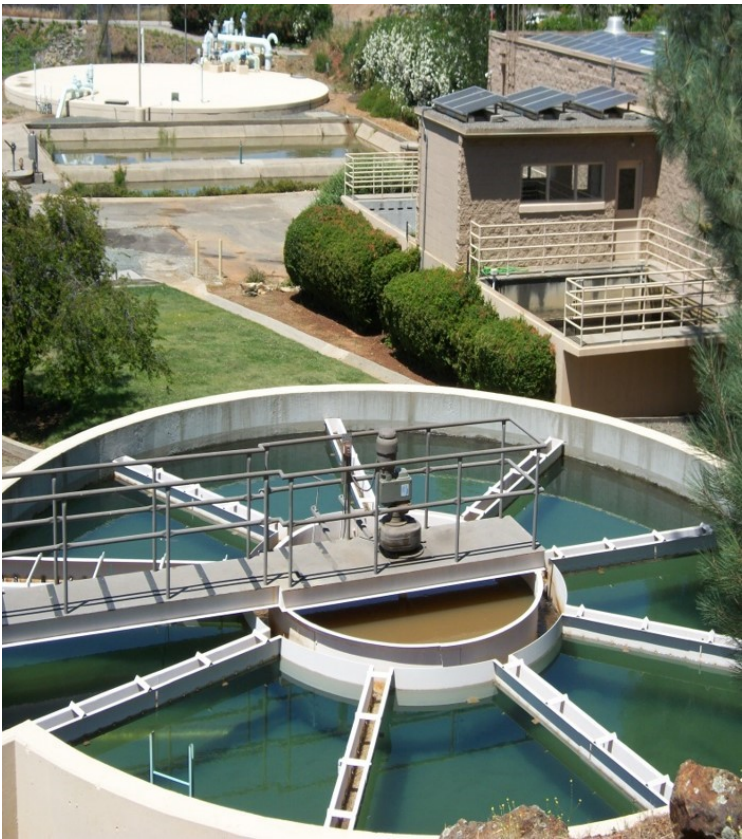
NID drinking water continues to meet and exceed state and federal public health standards. The District has released its Annual Water Quality Report (also known as the Consumer Confidence Report), which summarizes water quality monitoring and testing programs for the 2022 calendar year.

The information focuses on water supplied through the Elizabeth L. George, Loma Rica, Lake Wildwood, Lake of The Pines, and North Auburn water treatment plants.

The report covers a variety of substances, including microbial contaminants (such as viruses and bacteria), inorganic contaminants (such as salts and metals), pesticides and herbicides, organic chemical contaminants, including synthetic and volatile organic chemicals that are by-products of industrial processes and petroleum production and radioactive contaminants.



[Read the NID Water Quality Report \(reporting year 2022\)](#)





Bowman Lake

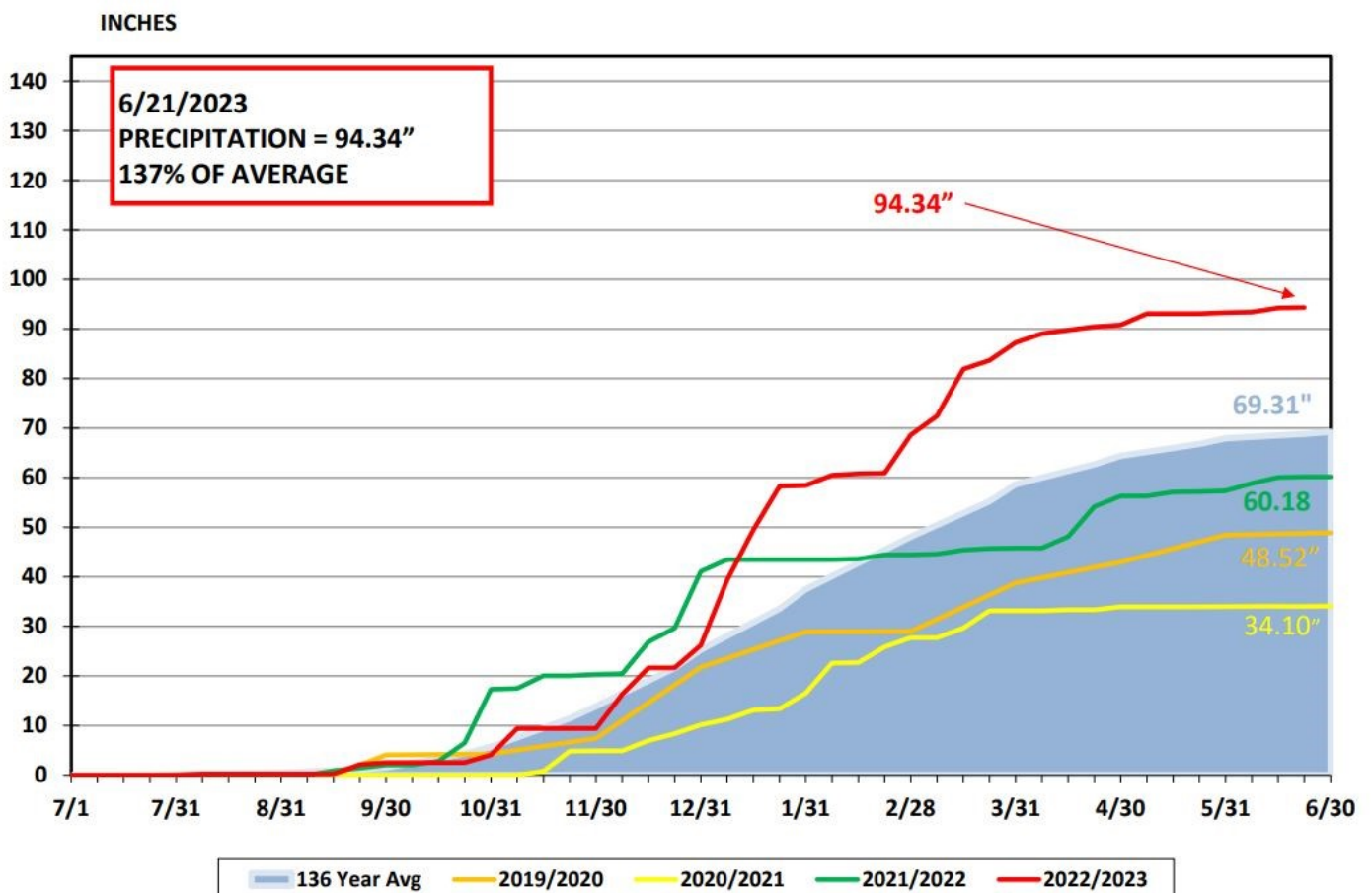
NID has been keeping weather records for Bowman Reservoir (elevation 5,650 ft.) since 1929.

The 69.2-inch annual average precipitation at Bowman compares to an annual average of 56 inches at 2,700 feet near Nevada City and 52 inches at 2,400 feet in Grass Valley.

Precipitation is measured for the 12-month period beginning July 1 and ending June 30.

As of June 21, 94.34 inches of precipitation have fallen at Bowman. That is 137 percent of average.

BOWMAN LAKE PRECIPITATION



Reservoir storage is 109% of average

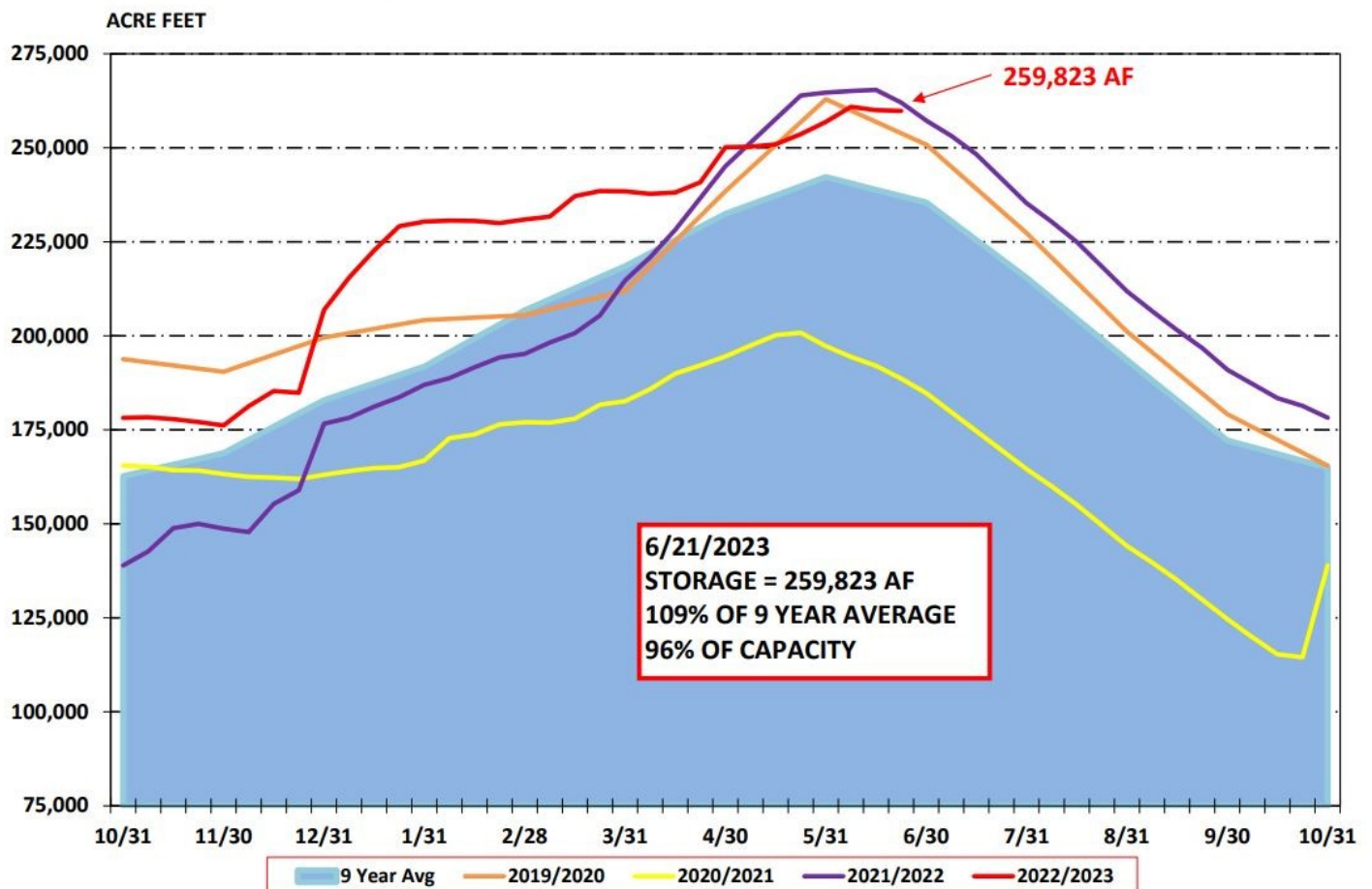
Reservoir storage is 259,823 acre-feet as of June 21. That is 96 percent of capacity and 109 percent of the nine-year average.

NID's water managers regularly post updates of local reservoir levels. You can see how water levels fluctuate in easy-to-read charts.

It's all just a click away on the NID website under [River & Reservoir Data](#).



NID RESERVOIR STORAGE



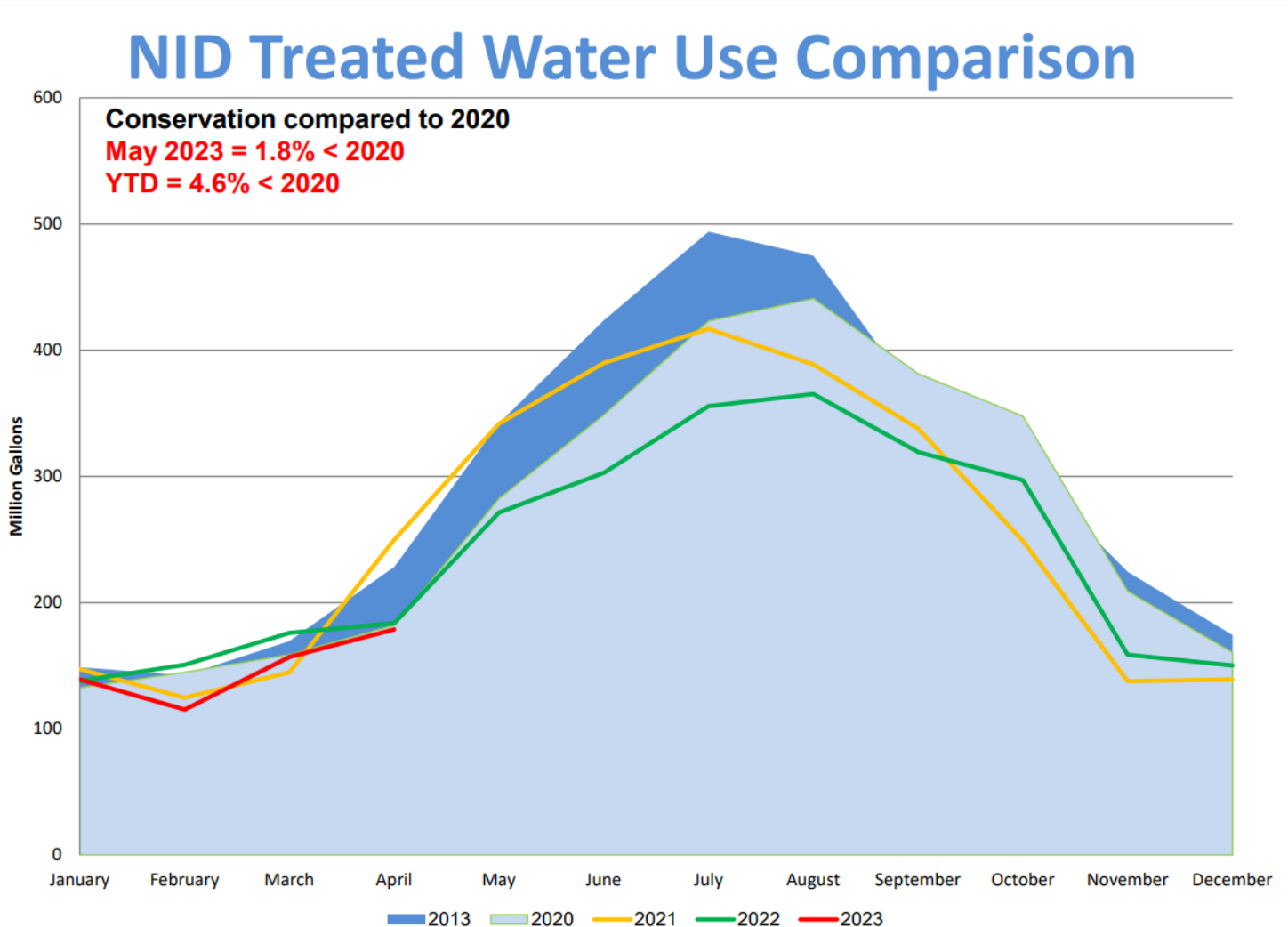
Water conservation — treated water use decreases

In May, treated water usage was down 9.5 percent. For the year to date, usage has decreased 4 percent over the previous 11 years.

The challenge for us all is to continue to use water efficiently and boost our conservation numbers.

Save water today; make it available for tomorrow

[Measure Your Water Use Calculator](#)



The above graph shows the overall water usage and effectiveness of conservation within the District's treated water customer base.

Project Updates—Engineering and Hydropower

The NID Engineering Department has a number of projects in various phases of construction. Read about the projects on our website, and sign up for email alerts for news about a specific project.

Updated Project Status Reports are now available on the [District's Projects webpage](#). This report provides project information, planner information, and a brief project description.

[Engineering Department Project Status Report](#)

[Hydroelectric Project Status Report](#)

David Way Pump Station

The David Way Pump Station project includes the replacement and upgrade of the District's original pump and pump station constructed over 50 years ago.

The pump provides water and pressure to 93 properties using a pneumatic pressure tank. In 2011 a generator was installed to supply electricity to the pump station during power outages.

The original single pump does not have any backup and does not supply standard fire flows during an emergency. If the pump is taken out of service or in need of repair, the 93 properties get minimal water under gravity pressure.



Former pump station

In 2021, the District contracted with EFI Solutions to build an off-site complete pump station and have it shipped complete to the project site. The new pump station was constructed on a movable steel frame foundation and includes two normal operation pumps (one for backup) and one fire flow pump delivering full fire flows. The pump station also came with a new generator mounted on the same steel frame.



New pump station

The new pump station is crucial to the continued service of treated water to the 93 customers. It also provides water for an additional 21 properties to the west that is part of the Maranatha Place Waterline Extension. This brings water to many of these properties that have poor to no operational wells (relying on raw water). The new waterline extension also provides fire service to three new fire hydrants further increasing the community fire safety.

**NID Regular Board of
Directors Meeting**

Wednesday, July 12
NID Office, Grass Valley
9 AM

**Meetings
& Events**

**NID Special Board of
Directors Meeting (Plan
for Water workshop)**

Tuesday, July 25
NID Office, Grass Valley
4 PM

Nidwater.com
for more
information

**NID Regular Board of
Directors Meeting**

Wednesday, July 26
NID Office, Grass Valley
9 AM



Happy Independence Day
4th of July

