



CIP Project Information Sheet 2023-2027 Annual Budget

Project Name: Lincoln Canal Realignment **Project No.:** 8262

Dept. 10151-Engineering Asset #: _____ Priority Ranking: 57

Facility: Lincoln Canal Facility #: 10494 Division #: Div 4

Project Manager: Adrian Schneider Constructed by: Contractor

New Construction: _____ Replacement: Upgrades: _____ Multiple Phases: No

CEQA: Exemption Permits: None ROW: Yes

Project Purpose: (Problem Statement)

Sections of the Lincoln Canal at various crossings are deteriorated and undersized for flows. Inlet/Outlet structures of Fowler siphon have restrictions and need to be improved/modified.

Project Description: (Proposed Solution)

Replace crossings at Monument Place, Hungry Hollow Road, Wild Turkey Road and Segoe Lane Crossings. Review hydraulics at inlet/outlet structures of Fowler siphon and either make improvements or replace.

Basis for Priority:

Road crossings are deteriorated and in overall poor condition. Road crossings also undersized and flow is restricted at Fowler siphon inlet/outlet structures.

Notes:

Project could potentially be constructed by NID Maintenance crews.

Expenditures:

Expense	Prior Years Actual	Amendments Carryovers/Encumbrances	2023	2024	2025	2026	2027	TOTAL
Consulting/Studies								0
Design/Engineering			15,000					15,000
Permitting/CEQA								0
Construction			275,000					275,000
Right of Way			10,000					10,000
Other:								0
Total:	0	0	300,000	0	0	0	0	300,000

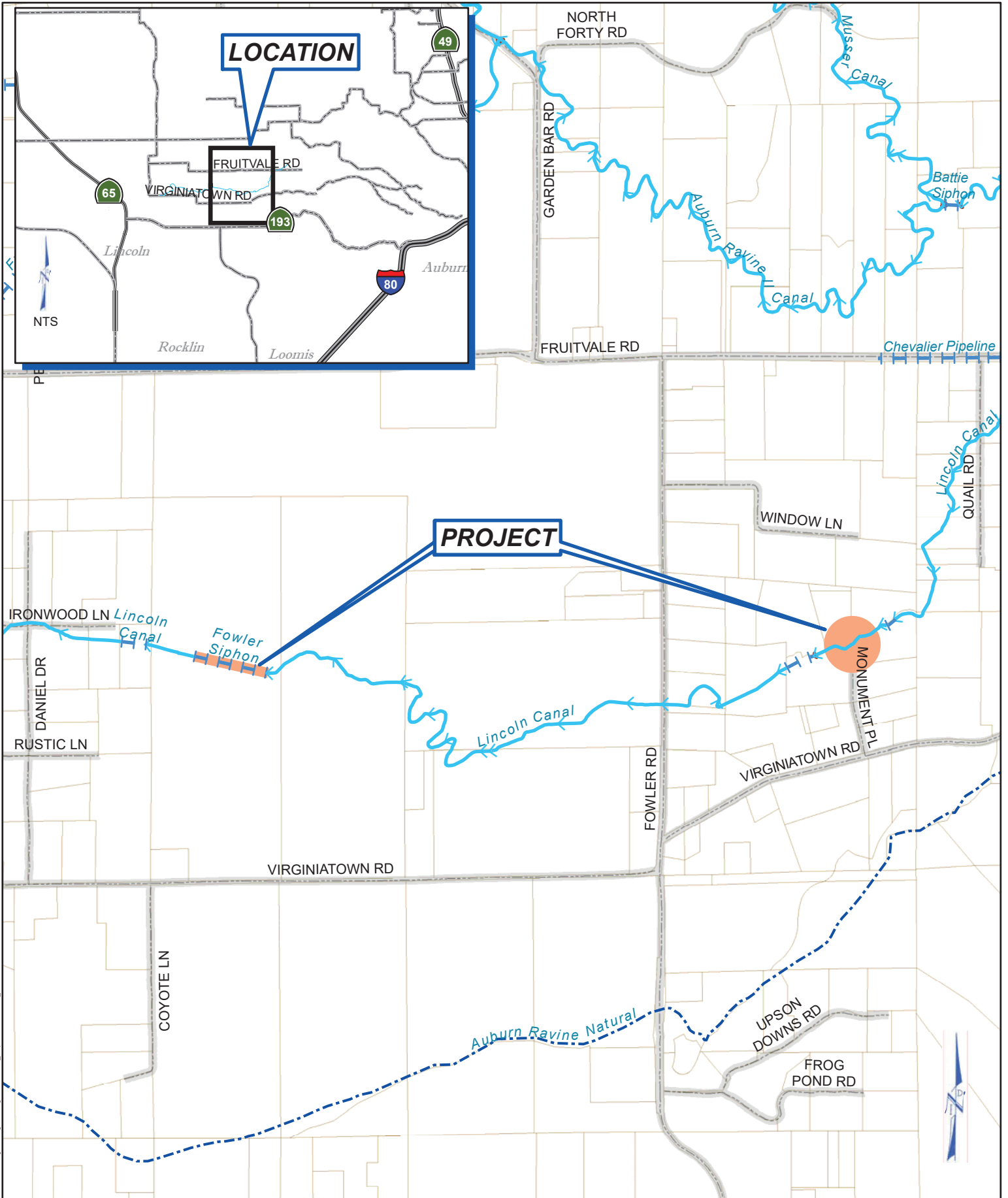
Funding Sources

Source	Prior Year Actual	Amendments Carryovers/Encumbrances	2023	2024	2025	2026	2027	TOTAL
Fund 15			300,000					300,000
								0
								0
Total:	0	0	300,000	0	0	0	0	300,000

Capital Improvement Project Scoring Sheet

Project Name: Lincoln Canal Realignment Project No.: 8262

Criteria	Scoring	Score
1. Capital Costs	10 Points = Lower Future Capital Costs 5 Points = No Impact 0 Points = Higher Future Capital Costs	5
2. Annual O & M Costs	10 Points = Lower Operating Costs 5 Points = No Impact 0 Points = Higher Operating Costs	5
3. Increased Revenue Potential	10 Points = Higher Revenues 5 Points = No Impact 0 Points = Lower Revenues	7
4. Health & Safety	10 Points = Reduces Threat/Impact to Health & Safety 5 Points = No Impact 0 Points = Increases Threat/Impact to Health & Safety	5
5. Environmental	10 Points = Improves/Reduces Impacts to Environment 5 Points = No Impact 0 Points = Increases Threat/Impact to Environment	5
6. Distributional or Hydro Generation Effects	10 Points = Project has Regional Benefit or Improves Generation 5 Points = Project has Limited Benefit or Improved Generation 0 Points = No Impact	5
7. Critical Infrastructure and Risk to Service Disruption.	10 Points = Deferral will Significantly Impact Disruption to Service 5 Points = Deferral will Moderately Impact Disruption to Service 0 Points = No Impact if Deferred	5
8. Board Strategic Plan/Goals	10 Points = Meets Strategic Plan/Goals Set by the Board 5 Points = Important Project, but Not Critical 0 Points = Does Not Meet Strategic Plan/Goals of the Board	5
9. Certainty of Project Funding	5 Points = Funded by Existing Revenue Source 2-3 Points = Requires Outside Funds High Likelihood of Obtaining 0 Points = Requires Outside Funding Low Likelihood of Obtaining	5
10. Associated Revenue to Offset Maintenance Costs	5 Points = Will Have Associated Revenue to Offset Maintenance Costs 2-3 Points = Will Have Associated Revenue to Offset Some Costs 0 Points = Asset Will Have No Change to Associated Revenue	3
11. Improves and/or Increases Level of Service	10 Points = Project Improves Level of Service 5 Points = Project Maintains Existing Level of Service 0 Points = Project Impacts Existing Level of Service	7
Max Score: 100	Total Prioritization Score:	57



Path: F:\Engineering\Drafting\arcview\CIP_Maps\LincolnCanal_20220411.mxd Save Date: 4/22/2022

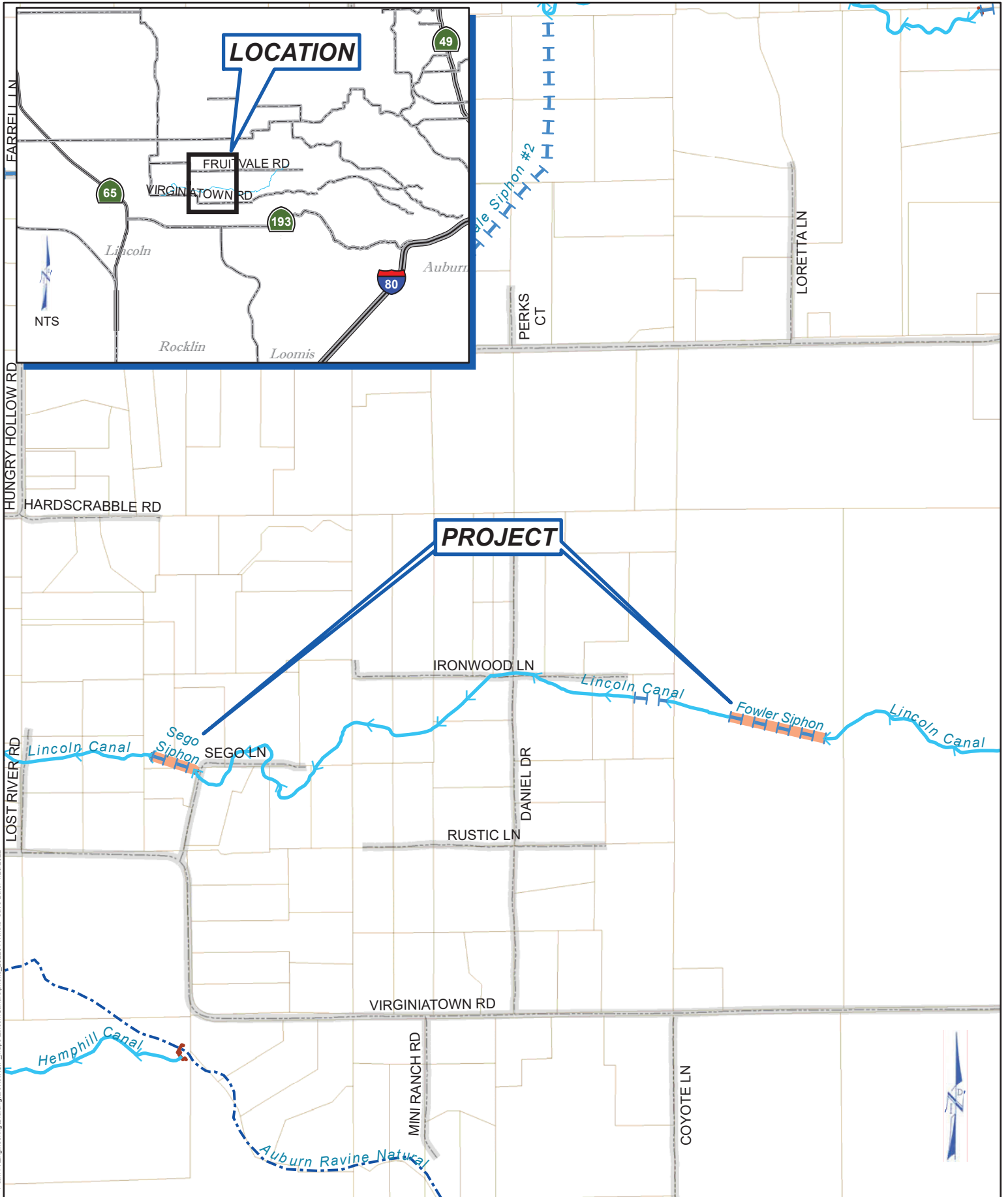
LINCOLN CANAL



Date: 4/22/2022
 Drawn By: L. HAMMER

NEVADA IRRIGATION DISTRICT
 NEVADA COUNTY -- PLACER COUNTY
 GRASS VALLEY, CALIFORNIA

Scale: 1" = 1/4 MILE @ 8.5x11
 Sheet: 1 of 1



Path: F:\Engineering\Drafting\arcview\CP_Maps\LincolnCanal\Siphons_20220411.mxd Save Date: 4/26/2022

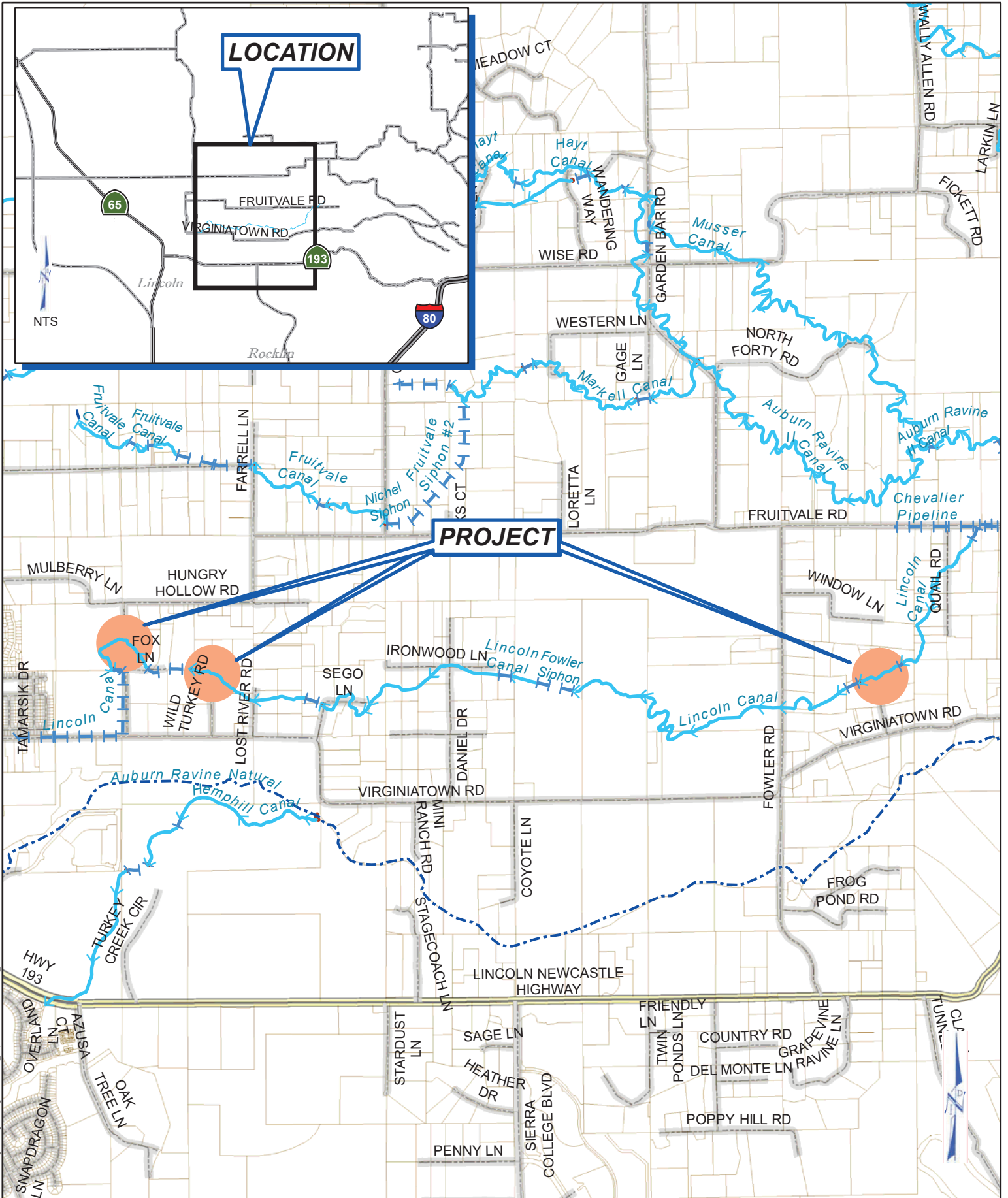
LINCOLN CANAL SIPHONS



Date: 4/26/2022
 Drawn By: L. HAMMER

NEVADA IRRIGATION DISTRICT
 NEVADA COUNTY -- PLACER COUNTY
 GRASS VALLEY, CALIFORNIA

Scale: 1" = 1000' @ 8.5 x 11
 Sheet: 1 of 1



Path: F:\Engineering\Drafting\arcview\CP_Maps\LincolnCanal\Culverts_20220411.mxd, Save Date: 4/26/2022

LINCOLN CANAL CULVERTS



Date: 4/26/2022
 Drawn By: L. HAMMER

NEVADA IRRIGATION DISTRICT
 NEVADA COUNTY -- PLACER COUNTY
 GRASS VALLEY, CALIFORNIA

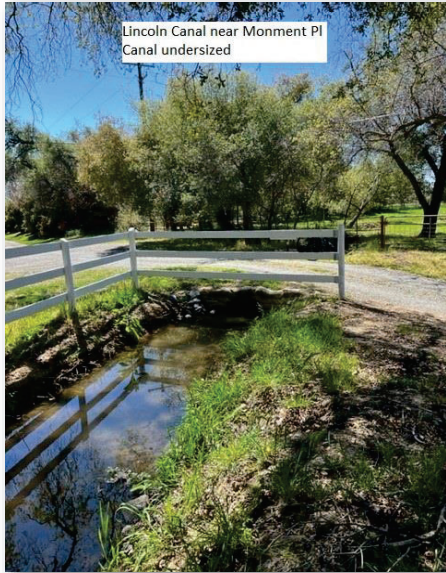
Scale: 1" = 2500' @ 8.5 x 11
 Sheet: 1 of 1



Inlet to Flower Siphon
Siphon is either undersized or restricted



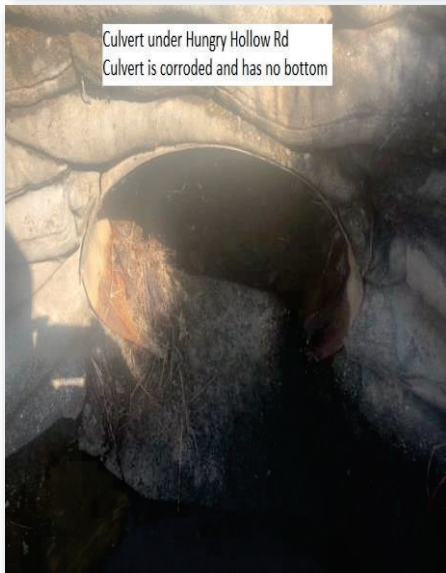
Outlet of Flower Siphon
Siphon is either undersized or restricted



Lincoln Canal near Monment Pl
Canal undersized



Area near Segro Ln where
Lincoln Canal is undersized



Culvert under Hungry Hollow Rd
Culvert is corroded and has no bottom



Wild Turkey Rd crossing
Lincoln Canal and culvert are undersized