



## CIP Project Information Sheet 2023-2027 Annual Budget

**Project Name:** Combie Ophir 2 & 3 Siphon      **Project No.:** 2645

Dept. 10151-Engineering      Asset #: \_\_\_\_\_      Priority Ranking: 71

Facility: Combie Ophir 2 & 3      Facility #: 10444/10451      Division #: Div 4

Project Manager: \_\_\_\_\_      Constructed by: Contractor

New Construction: \_\_\_\_\_      Replacement:       Upgrades: \_\_\_\_\_      Multiple Phases: Yes

CEQA: EIR      Permits: 1602, 401, 404, Caltrans, Placer County      ROW: Yes

**Project Purpose:** (Problem Statement)

Orr Creek, Dry Creek, and Rock Creek Siphons are steel pipes constructed in the 1940's. They have reached the end of life, are deteriorated and undersized.

**Project Description:** (Proposed Solution)

Design and construct 853 lf of pipeline to replace Orr Creek siphon, 3,292 lf of pipeline to replace Dry Creek siphon and 1,392 lf of pipeline to replace Rock Creek siphon. All siphons require crossing of various creeks, Hwy 49 and on hospital property requiring extensive permitting and CEQA.

**Basis for Priority:**

These facilities are part of the Combie Ophir system which is a major facility delivering raw water.

**Notes:**

Design, permitting and ROW to be done in 2023. Construction of the 3 siphons to be completed in phases. Orr Creek siphon to be constructed in 2024, Dry Creek siphon in 2025 and Rock Creek siphon in 2026.

**Expenditures:**

Expense	Prior Years Actual	Amendments Carryovers/Encumbrances	2023	2024	2025	2026	2027	TOTAL
Consulting/Studies			90,000					90,000
Design/Engineering			40,000					40,000
Permitting/CEQA			10,000					10,000
Construction				485,000	1,880,000	3,861,000		6,226,000
Right of Way			30,000					30,000
Other:								0
<b>Total:</b>	0	0	170,000	485,000	1,880,000	3,861,000	0	6,396,000

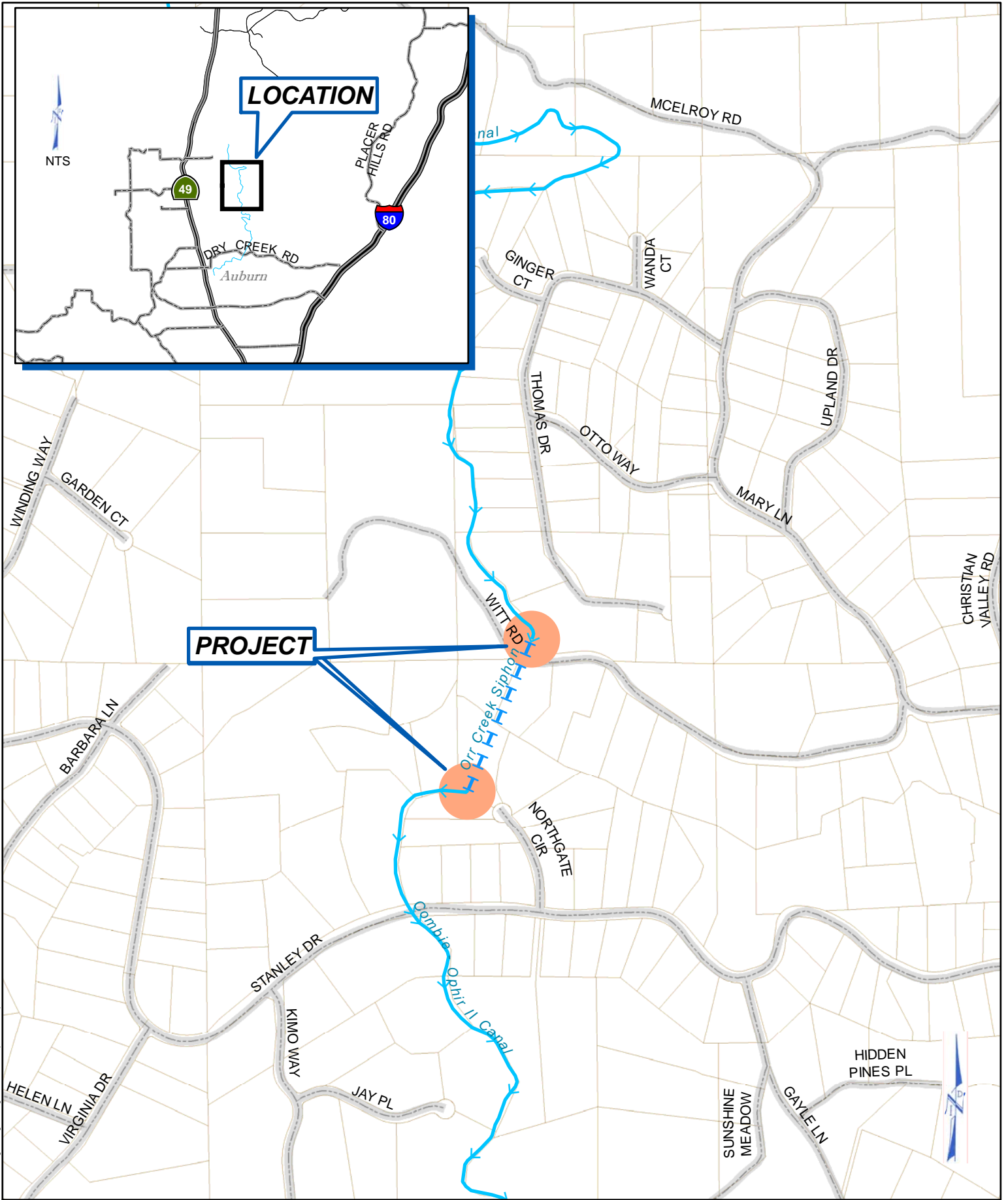
**Funding Sources**

Source	Prior Year Actual	Amendments Carryovers/Encumbrances	2023	2024	2025	2026	2027	TOTAL
			170,000	485,000	1,880,000	3,861,000		6,396,000
								0
								0
<b>Total:</b>	0	0	170,000	485,000	1,880,000	3,861,000	0	6,396,000

## Capital Improvement Project Scoring Sheet

Project Name: **Combie Ophir 2 & 3 Siphon** Project No.: **2645**

Criteria	Scoring	Score
<b>1. Capital Costs</b>	<b>10</b> Points = Lower Future Capital Costs <b>5</b> Points = No Impact <b>0</b> Points = Higher Future Capital Costs	5
<b>2. Annual O &amp; M Costs</b>	<b>10</b> Points = Lower Operating Costs <b>5</b> Points = No Impact <b>0</b> Points = Higher Operating Costs	5
<b>3. Increased Revenue Potential</b>	<b>10</b> Points = Higher Revenues <b>5</b> Points = No Impact <b>0</b> Points = Lower Revenues	9
<b>4. Health &amp; Safety</b>	<b>10</b> Points = Reduces Threat/Impact to Health & Safety <b>5</b> Points = No Impact <b>0</b> Points = Increases Threat/Impact to Health & Safety	8
<b>5. Environmental</b>	<b>10</b> Points = Improves/Reduces Impacts to Environment <b>5</b> Points = No Impact <b>0</b> Points = Increases Threat/Impact to Environment	4
<b>6. Distributional or Hydro Generation Effects</b>	<b>10</b> Points = Project has Regional Benefit or Improves Generation <b>5</b> Points = Project has Limited Benefit or Improved Generation <b>0</b> Points = No Impact	10
<b>7. Critical Infrastructure and Risk to Service Disruption.</b>	<b>10</b> Points = Deferral will Significantly Impact Disruption to Service <b>5</b> Points = Deferral will Moderately Impact Disruption to Service <b>0</b> Points = No Impact if Deferred	10
<b>8. Board Strategic Plan/Goals</b>	<b>10</b> Points = Meets Strategic Plan/Goals Set by the Board <b>5</b> Points = Important Project, but Not Critical <b>0</b> Points = Does Not Meet Strategic Plan/Goals of the Board	5
<b>9. Certainty of Project Funding</b>	<b>5</b> Points = Funded by Existing Revenue Source <b>2-3</b> Points = Requires Outside Funds High Likelihood of Obtaining <b>0</b> Points = Requires Outside Funding Low Likelihood of Obtaining	5
<b>10. Associated Revenue to Offset Maintenance Costs</b>	<b>5</b> Points = Will Have Associated Revenue to Offset Maintenance Costs <b>2-3</b> Points = Will Have Associated Revenue to Offset Some Costs <b>0</b> Points = Asset Will Have No Change to Associated Revenue	3
<b>11. Improves and/or Increases Level of Service</b>	<b>10</b> Points = Project Improves Level of Service <b>5</b> Points = Project Maintains Existing Level of Service <b>0</b> Points = Project Impacts Existing Level of Service	7
<b>Max Score: 100</b>	<b>Total Prioritization Score:</b>	<b>71</b>



**PROJECT**

**LOCATION**

## COMBIE OPHIR 2 & 3

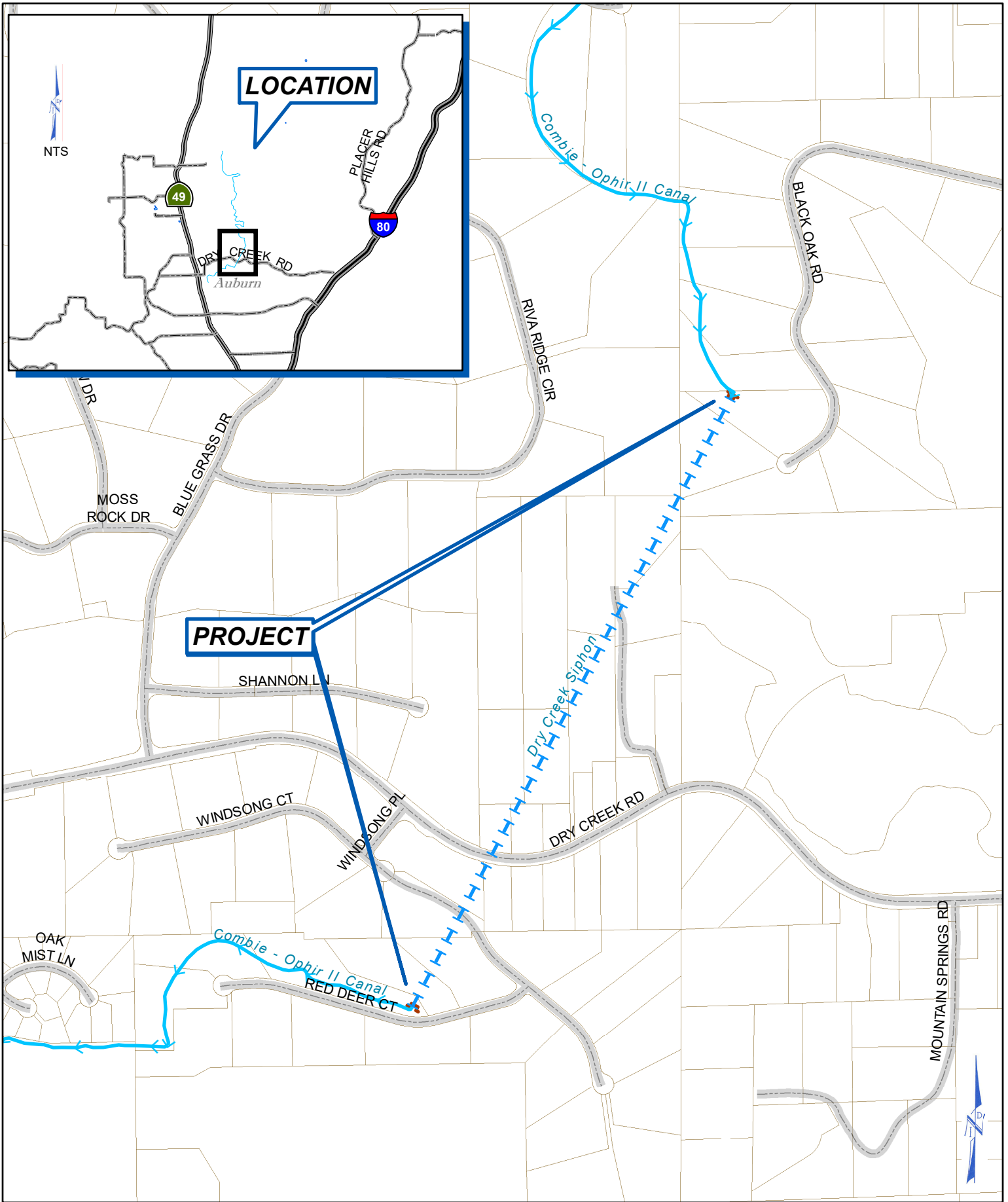


Date: 4/22/2022  
 Drawn By: L. HAMMER

**NEVADA IRRIGATION DISTRICT**  
 NEVADA COUNTY -- PLACER COUNTY  
 GRASS VALLEY, CALIFORNIA

Scale: 1" = 600' @ 8.5x11  
 Sheet: 1 of 1

Path: F:\Engineering\Drafting\arcview\CIP\_Maps\CombieOphir2&3\_20220411.mxd Save Date: 4/22/2022



Path: F:\Engineering\Drafting\GIS\_Web\CapitalImprovement\Projects\DryCreekSiphon\_20221019.mxd Save Date: 10/19/2022

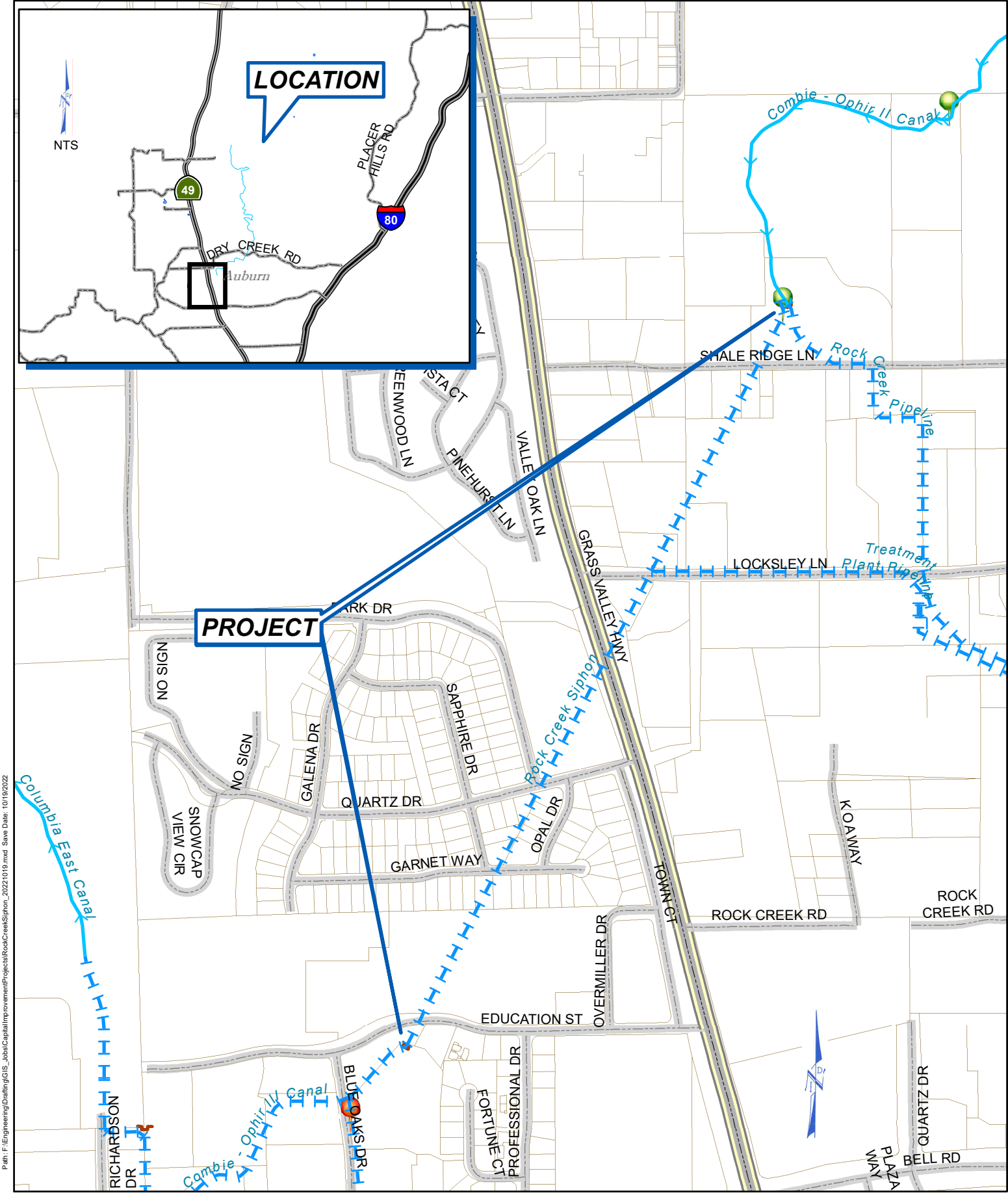
## DRY CREEK SIPHON



Date: 10/19/2022  
 Drawn By: A.WILL

**NEVADA IRRIGATION DISTRICT**  
 NEVADA COUNTY -- PLACER COUNTY  
 GRASS VALLEY, CALIFORNIA

Scale: 1" = 600' @ 8.5x11  
 Sheet: 1 of 1



Path: F:\Engineering\Drafting\GIS\_Layout\CaptialImprovement\Project\RockCreekSiphon\_20221019.mxd, Save Date: 10/19/2022

# ROCK CREEK SIPHON



Date: 10/19/2022  
 Drawn By: A.WILL

**NEVADA IRRIGATION DISTRICT**  
 NEVADA COUNTY -- PLACER COUNTY  
 GRASS VALLEY, CALIFORNIA

Scale: 1" = 600' @ 8.5x11  
 Sheet: 1 of 1

